



LIBRARIES

UNIVERSITY OF WISCONSIN-MADISON

Wisconsin basketball 1953-54. 1953

Madison, Wisconsin: National "W" Club, 1953

<https://digital.library.wisc.edu/1711.dl/62X7CYZCX7PUD83>

<http://rightsstatements.org/vocab/InC/1.0/>

The libraries provide public access to a wide range of material, including online exhibits, digitized collections, archival finding aids, our catalog, online articles, and a growing range of materials in many media.

When possible, we provide rights information in catalog records, finding aids, and other metadata that accompanies collections or items. However, it is always the user's obligation to evaluate copyright and rights issues in light of their own use.

Wisconsin



1953-54

BASKETBALL

Dec. 1—**BUTLER** at **MADISON**
Dec. 4—**MARQUETTE** at **MILWAUKEE**
Dec. 7—**LOYOLA** at **CHICAGO**
Dec. 12—**MISSOURI** at **MADISON**
Dec. 14—**OKLAHOMA** at **MADISON**
Dec. 19—**LOUISIANA ST.** at **B. ROUGE**
Dec. 21—**TULANE** at **NEW ORLEANS**
Dec. 28—**DENVER U.** at **MADISON**
Jan. 2—**PURDUE** at **MADISON**
Jan. 4—**INDIANA** AT **BLOOMINGTON**
Jan. 9—**IOWA** at **IOWA CITY**

Jan. 11—**NORTHWESTERN** at **MADISON**
Jan. 16—**INDIANA** at **MADISON**
Jan. 18—**MICH. STATE** at **E. LANSING**
Feb. 6—**OHIO STATE** at **COLUMBUS**
Feb. 13—**ILLINOIS** at **MADISON**
Feb. 15—**MINNESOTA** at **MADISON**
Feb. 20—**MICHIGAN** at **MADISON**
FEB. 22—**ILLINOIS** at **CHAMPAIGN**
Feb. 27—**PURDUE** at **LAFAYETTE**
Mar. 1—**MICH. STATE** at **MADISON**
Mar. 6—**MINNESOTA** at **MINNEAPOLIS**

Information for Press - Radio - Television
Compiled by U. W. Sports News Service

PUBLISHED AND SOLD BY NATIONAL W CLUB
(An Alumni Organization of Major Lettermen)

University of Wisconsin Basketball Scoring Records

Team Records

Most points in entire season — 1,447, scored in 22 games, 1953.

Most points in entire Big Ten season—1162, scored in 18 games, 1953. 817 scored in 14 games, 1952. 718 scored in 15 games in 1942. 701 scored in 12 games, 1950.

Most points single game—82, scored vs. Oregon, Dec. 27, 1951, at Cow Palace, San Francisco, Calif. 81 scored vs. Loyola of South, Dec. 8, 1952, at New Orleans, La. 80, scored vs. Beloit, Jan. 7, 1905, at Madison. 79, scored vs. Western Ontario, Canada, in field house, Feb. 26, 1949.

Most points single Big Ten game—78, vs. Northwestern at Evanston, Ill., Jan. 17, 1953. 78 vs. Iowa at Iowa City, Mar. 3, 1952. 76, vs. Minnesota at field house, Jan. 12, 1953.

Most points single game for both teams—159 (Wisconsin 82, Oregon 77, at San Francisco, Calif., Dec. 27, 1951.) For Big Ten game—153 (Wisconsin 78, Iowa 75, at Iowa City, Mar. 3, 1952.) 150—(Wisconsin 76, Minnesota 74, at field house, Jan. 12, 1953.)

Most points first half—53 (Wisconsin 53, Ohio State 30, Feb. 13, 1951, at Columbus).

Most field goals entire season — 486, scored in 22 games, 1953.

Most field goals Big Ten season—391, scored in 18 games, 1953. 291 scored in 15 games, 1942. 290, scored in 14 games, 1952. 261, scored in 12 games in 1950.

Most field goals single game—33 (vs. Loyola of South at New Orleans, Dec. 8, 1952). For Big Ten Game—33 (vs. Iowa at Iowa City, Mar. 3, 1952).

Most free throws entire season — 473, scored in 22 games, 1953.

Most free throws Big Ten season—378, scored in 18 games, 1953. 237, scored in 14 games, 1949. 181, scored in 12 games, 1947 and 1949.

Most free throws attempted single game—48, vs. Minnesota at field house, Jan. 12, 1953; also vs. Michigan State at field house, Mar. 9, 1953.

Most free throws made single game—40, vs. Minnesota, Jan. 12, 1953.

Team Percentages

Best field goal percentage for entire season—326 in 22 games, 1953. (486 goals in 1497 attempts).

Best field goal percentages for Big Ten season—318 in 18 games, 1953 (391 goals in 1231 attempts). For 14 games—311 in 1951 (286 goals in 920 attempts). For 12 games—298 in 1947 (248 goals in 833 attempts).

Best field goal percentage single game—452 vs. Loyola of South at New Orleans, Dec. 8, 1952 (33 of 73 attempts).

Best field goal percentage Big Ten game—434 vs. Iowa at Iowa City, Mar. 3, 1952 (33 of 76 attempts).

Best free throw percentage for entire season—.667 in 1941 in 23 games (made 294 of 441 attempts).

Best free throw percentage for Big Ten season—.676 in 1941, 12 games (made 146 of 216 attempts). Wisconsin also hit .675 in 1950 with 179 out of 265.

Best free throw percentage for single game—.850 (vs. Marquette at Milwaukee, Dec. 21, 1946, 17 of 20 attempts).

Best free throw percentage for Big Ten game—.846 (vs. Minnesota at Minneapolis, Mar. 4, 1950, 22 of 26 attempts).

Individual Records

Most points in entire season—462, scored by Chris Steinmetz, in 18 games, 1905. 436, scored by Don Rehfeldt in 22 games, 1950. 381, by Rehfeldt in 1949. 366 by Ab Nicholas in 1951. 361 by Nicholas in 1952. 352 by Paul Morrow in 1953. 325 by John Kotz in 1942. 323 by Bob Cook in 1947.

Most points in Big Ten season (18 games)—275, by Paul Morrow in 1953. For 12 games—265 by Don Rehfeldt, in 1950. For 15 games—242, by John Kotz in 1942. For 14 games—235, by Ab Nicholas in 1952.

Most points in single game—50, by Chris Steinmetz, vs. Sparta in 1905. 35, by Don Rehfeldt vs. Northwestern in Chicago Stadium, Feb. 11, 1950. 34 by Rehfeldt vs. Iowa in field house, Feb. 28, 1949.

Most field goals entire season—170 by Don Rehfeldt in 22 games, 1950. 146 by Rehfeldt in 1949.

Most field goals Big Ten season—101 by Rehfeldt in 12 games, 1950. 95 by John Kotz in 15 games, 1942. 92 by Paul Morrow, 18 games, 1953.

Most field goals single game—20, by Steinmetz vs. Beloit, 1905. 13 by Otto Stangel vs. Iowa in 1912, equalled by Rehfeldt vs. Iowa on Feb. 28, 1949. 12 by George Levis vs. Iowa in 1916; by Gene Englund vs. Butler, Feb. 8, 1941; by Kotz vs. Iowa, Mar. 7, 1942; by Kotz vs. Iowa on Feb. 8, 1943; by Des Smith vs. Purdue, Feb. 17, 1945; by Rehfeldt vs. Northwestern, Feb. 11, 1950; by Rehfeldt vs. Iowa, Feb. 13, 1950.

Most free throws in single season—238 by Chris Steinmetz, 1905 (317 attempts). 121 by Ab Nicholas, 1952. 114 by Morrow in 1953.

Most free throws made Big Ten season—91 by Paul Morrow in 18 games, 1953. For 14 games—77 by Ab Nicholas, 1952. For 12 games—63, by Rehfeldt 1950.

Most free throws made single game—26 by Chris Steinmetz, vs. Two Rivers, 1905 (30 attempts).

Most free throws made Big Ten game—15, by Paul Morrow vs. Michigan at Ann Arbor, Feb. 21, 1953. (24 attempts). 12 by Dick Cable vs. Michigan, Feb. 14, 1953 at Madison. 11 by Bob Cook vs. Marquette at Milwaukee, Dec. 31, 1947. 11 by Don Rehfeldt vs. Northwestern at Chicago Stadium, Feb. 11, 1950.

Most free throws attempted single game—24, by Paul Morrow, vs. Michigan, Feb. 21, 1953, at Ann Arbor. 15 by Ab Nicholas vs. Michigan, Feb. 25, 1952. 15 by Morrow vs. Marquette, Dec. 5, 1952.

Consecutive free throws single game—10, by Bob Cook vs. Marquette, Dec. 31, 1947. For any set of games—13, by Tony Stracka, 1953 (2 vs. Indiana, 8 vs. Michigan, first 3 vs. Indiana) 13 by Doug Rogers (3 vs. Marquette, 6 vs. Illinois, 4 vs. Minnesota) in 1948. Note—Mike Daly, reserve forward, made all 11 of his attempts during 1953 season.

Best scoring average per game entire season—19.8 points, by Rehfeldt in 1950.

Best scoring average per game Big Ten season—22.1 points, by Rehfeldt, 1950 (12 games).

FIELDHOUSE RECORDS SINGLE GAME

Team Records

Most points scored by one team—86 by Iowa vs. Oregon, Dec. 26, 1952. 79 by Wisconsin vs. Western Ontario, Feb. 26, 1949. For Big Ten game—79 by Purdue vs. Wisconsin, Jan. 5, 1952. 76 by Wisconsin vs. Minnesota, Jan. 12, 1953.

Most points scored by both teams—150 (Wisconsin 76, Minnesota 74) Jan. 12, 1952.

Most field goals scored—32 by Iowa (vs. Wisconsin, Feb. 17, 1951).

Most free throws scored—40 by Wisconsin vs. Minnesota, Jan. 12, 1953.

Most free throws attempted—48 by Wisconsin vs. Minnesota, Jan. 12, 1953. 46 by Wisconsin vs. Marquette, Dec. 4, 1948.

Best free throwing average by one team—.850 by Michigan vs. Wisconsin, Feb. 2, 1946 (17 of 20 attempts). .833 by Wisconsin vs. Minnesota, Jan. 12, 1953 (40 of 48 attempts.)

Best field goal shooting percentage—429 by Wisconsin vs. San Jose State, Dec. 28, 1950 (27 of 63 attempts). For Big Ten game—404 by Minnesota vs. Wisconsin, Feb. 9, 1952 (21 of 52 attempts). .383 by Wisconsin vs. Illinois, Jan. 1, 1951 (29 of 76 attempts).

Most personal fouls by one team—39 by Marquette vs. Wisconsin Dec. 4, 1949. For Big Ten game—35 by Purdue Jan. 5, 1952. 34 by Indiana in 1949. Wisconsin twice had 30 (vs. Marquette, Dec. 4, 1949 and vs. Illinois Jan. 1, 1951).

Individual Records

Most points scored—34 by Don Rehfeldt, Wisconsin vs. Iowa, Feb. 28, 1949 (13 fg, 8 ft).

Most field goals scored—13 by Rehfeldt vs. Iowa, Feb. 28, 1949.

Most free throws—12 by Dick Cable, Wisconsin vs. Michigan, Feb. 14, 1953 (14 attempts).

Most free throws attempted—17 by Gene Berce, Marquette vs. Wisconsin, Dec. 7, 1946. For Big Ten game—14, by Ray Patterson, Wisconsin vs. Purdue, Feb. 19, 1944; also by Cable vs. Michigan in 1953.

Best field goal shooting percentage—750, by Dick Means, Minnesota vs. Wisconsin, Jan. 16, 1950 (9 of 12 attempts). .647 by Jim Clinton, Wisconsin vs. San Jose State, Dec. 28, 1950 (11 of 17 attempts).

Best free throwing percentage—909, by Bob Haarlow, Wisconsin vs. Iowa, Feb. 3, 1947 (10 of 11 tries).

First Division Berth Good Possibility For Badgers

A First division berth in the Big Ten conference, is a good possibility for Wisconsin's 1953-54 varsity basketball squad.

Coach Bud Foster's Badger squad is more heavily stocked with experienced material than any recent Wisconsin quintet and even the veteran Badger mentor feels optimistic over his team's chances for a winning record.

Only losses from the club which last year won 13 and lost 9 in overall season play and which finished 5th in the tough Big Ten race, were the two starting guards, Charles Siefert, and Tom Ward.

On the other hand, nine major "W" men are available for this season's campaign including Jim Clinton, letterman two seasons ago, who has returned to bolster the talent nucleus. Clinton, as a sophomore in the 1950-51 season, was second highest scorer on the team with 263 points and, in Big Ten play, was high among the leaders with 177 points or an average of 12.6 points per game. In addition, he was a great rebounder and if he can regain his previous form after the two-year layoff because of ineligibility and illness, his presence can do a great deal for the Badgers.

Two other boys, although not lettermen, also are back after a season of inaction due to ineligibility. They are Bob Badura, Kohler, sophomore, and John Kardach, Stevens Point, junior.

Three of last year's starters, Forwards Dick Cable of Stevens Point and Tony Stracka of Hartford, and Center Paul Morrow of St. Croix Falls, are back to form the nucleus of the team. Other letter winners on hand are Forward Mike Daly, Wisconsin Rapids; Center Dan Folz, Milwaukee; Guards Ronnie Weisner, Elgin, Ill.; Bob Weber, Lodi, and Roger Godfrey, Wauwatosa.

With Clinton available and in form, Coach Foster may use Cable at both forward and guard.

Sophomore talent also is of good grade. Most outstanding of the newcomers is Dick Miller from Wheeling, W. Va., who performs at guard, is a hard driver, and a good set shot from outside. Others are Dick Jorgensen, all-stater from Neenah, a guard; Curt Mueller, Prairie du Sac, center; Tom Mack, guard, and John Parker, center, both of Madison.

Foster rates his prospects as considerably improved over last year, figures his general team speed is good

enough for the rough campaign, and, could easily produce a team worthy of contention in the title fight.

The season opens with eight straight non-loop tests with Butler at Madison on Dec. 1. Marquette, Loyola of Chicago, Missouri, Oklahoma, Louisiana State, Tulane, and Denver follow before the 14-game slate against Big Ten opponents begins with Purdue at Madison, Jan. 2.

Meanwhile a 27-man freshman squad has been established by Coaches Fritz Wegner and Art Rizzi. The yearlings who survived initial squad cuts include:

Adrian Askeland, Rockford, Ill.; Mike Belkin, Cleveland Heights, Ohio; Norm Epstein, Madison; Larry Erickson, Eau Claire; Ken Frank, West Bend; Bob Goemans, Appleton; Bob Halloran, New Bedford, Mass.; Gil Homstead, Black River Falls; Dick Koch, Duluth, Minn.

Bob Krainer, Berkeley, Mich.; Bill Mallatt, Madison; Tom Miller, Niagara; Dick McVey, Superior; Tom Miller, Madison; Pete Olson, Middleton; Leo Pecore, Colfax; Charles Perry Wauwatosa; Dick Reque, Oshkosh.

Dick Rice, Pewaukee; Dick Schneider, Sheldon, Iowa; Jerry Schwartz, Hartford; Wayne Stoltz, Tomah; Alan Tetzlaff, Wauwatosa; Bob Torresani, Wisconsin Rapids; Paul Wroblewski, Rocky River, Ohio; Jack Zielke, Cudahy; and Dick Zeiger, Milwaukee.

—W—

BADGER BRIEFS

Wisconsin will wear white uniforms with cardinal numerals and letters at all home games. On the road, the uniforms are cardinal, with white lettering and numerals.

—W—

Wisconsin and Purdue lead the Big Ten in titles won or shared. Each won six titles undisputedly and each has shared championships on seven occasions.

—W—

Wisconsin ranks second among Big Ten teams in all-time conference standings with 339 wins against 241 losses for a percentage of .584. Illinois is first with 353 wins and 225 losses for a percentage of .611.

—W—

Wisconsin holds the Big Ten record for most consecutive conference wins with 23, set over the 1912 and 1913 seasons.

POSITION LEADERS

Forwards

Tony Stracka	Dick Cable*
Ronnie Weisner*	Jim Clinton
Mike Daly	Jack Manning
	Curt Mueller

Centers

Dan Folz	Paul Morrow
	John Parker

Guards

Ron Weisner*	Dick Cable*
Bob Weber	Bob Badura
	Dick Jorgensen
Roger Godfrey	Dick Miller

*Play both positions.

WISCONSIN CAGERS WHO HAVE WON BIG TEN SCORING TITLES

Year		Pts.
1906	Emmett Angell	96
1912	Otto Stangel	177
1915	George Levis	140*
1916	George Levis	117*
1942	John Kotz	242
1947	Bob Cook	187
1949	Don Rehfeldt	229
1950	Don Rehfeldt	265

*Shared title with Brockenbraugh of Purdue.

Wisconsin Student Managers in Basketball

1902—F. C. Inbusch	1919—H. B. Higbee	1937—Dick Johnson
1903—Herbert F. Lindsay	1920—E. Hagen	1938—Carlyle Pritchard
1904—Chester B. Roberts	1921—D. Reynolds	1939—Bill Pipkorn
1905—G. Stewart McConochie	1922—G. Davis	1940—Ed Gnoza
1906—Zeb Kinsey	1923—G. Davis	1941—Morris Bradley
1907—Guy Benedict	1924—G. Wanzer	1942—Ted Gunz
1908—Charles Scribner	1925—G. Walker	1943—Antone Prasil
1909—James Hogan	1926—G. Schmidt	1944—Lance Glasson
1910—G. Dacy	1927—G. Nelson	1945—Rex Capwell
1911—Henry Schwance	1928—L. Larson	1946—Rex Capwell
1912—E. C. Austin	1929—Johnny Hume	1947—Bob Wolf
1913—B. Welsler	1930—M. Reiersen	1948—Art Sandmark
1914—O. Stolz	1931—Not listed	1949—Sherwin Dervich
1915—J. Homet	1932—Not listed	1950—Don Steinmetz
1916—G. Ruder	1933—Wally Johns	1951—James Mott
1917—W. Lester	1934—Gus Froelich	1952—Harry Dean
1918—Arch Ward	1935—Tom Gilbert	1953—Pete Meyer
	1936—Lew Kranick	

Composite All-Time Won-and-Lost Basketball Record

— All Season Games —

— Western Conference Games —

Year	Won	Lost	Team Points	Opp. Points	Won	Lost	Team Points	Opp. Points	Final Rank	Wisconsin Coach
1899	0	3	43	58	—	—	—	—	—	Dr. J. C. Elsom
1900	1	1	40	32	—	—	—	—	—	Dr. J. C. Elsom
1901	1	1	50	64	—	—	—	—	—	Dr. J. C. Elsom
1902	7	3	316	203	—	—	—	—	—	Dr. J. C. Elsom
1903	5	2	213	142	—	—	—	—	—	Dr. J. C. Elsom
1904	10	4	422	396	—	—	—	—	—	Dr. J. C. Elsom
1905	10	8	681	439	—	—	—	—	—	Emmett D. Angell
1906	12	2	370	278	6	2	182	155	2	Emmett D. Angell
1907	11	3	407	264	6	2	217	139	1*	Emmett D. Angell
1908	10	2	366	199	7	2	252	160	1**	Emmett D. Angell
1909	8	4	329	166	5	4	188	139	3	Haskell Noyes
1910	9	5	349	204	7	5	293	190	2	Haskell Noyes
1911	9	6	431	249	6	6	317	223	5	Haskell Noyes
1912	15	0	487	223	12	0	382	180	1	Dr. Walter Meanwell
1913	14	1	414	225	11	1	297	187	1	Dr. Walter Meanwell
1914	15	0	520	226	12	0	377	196	1	Dr. Walter Meanwell
1915	13	4	480	319	8	4	316	246	3	Dr. Walter Meanwell
1916	20	1	674	343	11	1	359	221	1	Dr. Walter Meanwell
1917	15	3	528	332	9	3	290	226	4	Dr. Walter Meanwell
1918	14	3	396	311	9	3	269	234	1	Guy Lowman
1919	5	11	312	369	3	9	231	278	9*	Guy Lowman
1920	15	5	553	402	7	5	332	294	5	Guy Lowman
1921	13	4	411	301	8	4	283	236	1*	Dr. Walter Meanwell
1922	14	5	442	350	8	4	279	231	2*	Dr. Walter Meanwell
1923	12	3	344	198	11	1	286	160	1*	Dr. Walter Meanwell
1924***	11	5	426	348	8	4	278	259	1*	Dr. Walter Meanwell
1925	6	11	341	395	3	9	237	290	9	Dr. Walter Meanwell
1926	8	9	462	437	4	8	298	331	8*	Dr. Walter Meanwell
1927	10	7	434	395	7	5	312	279	4*	Dr. Walter Meanwell
1928	13	4	453	369	9	3	328	286	3*	Dr. Walter Meanwell
1929	15	2	522	386	10	2	342	285	1*	Dr. Walter Meanwell
1930	15	2	446	315	8	2	255	209	2	Dr. Walter Meanwell
1931	8	9	379	363	4	8	247	303	7*	Dr. Walter Meanwell
1932	8	10	441	482	3	9	280	348	8*	Dr. Walter Meanwell
1933	7	13	491	550	4	8	306	354	8	Dr. Walter Meanwell
1934	14	6	655	504	8	4	374	333	2*	Dr. Walter Meanwell
1935	15	5	589	492	9	3	363	303	1*	Harold E. Foster
1936	11	9	573	595	4	8	333	417	8	Harold E. Foster
1937	8	12	599	685	3	9	363	443	8*	Harold E. Foster
1938	10	10	730	710	5	7	439	449	7	Harold E. Foster
1939	10	10	630	672	4	8	369	421	7*	Harold E. Foster
1940	5	15	744	810	3	9	444	470	9	Harold E. Foster
1941-A	20	3	1004	835	11	1	536	424	1	Harold E. Foster
1942	14	7	979	839	10	5	718	606	2*	Harold E. Foster
1943	12	9	1022	957	6	6	592	555	4*	Harold E. Foster
1944	12	9	954	921	9	3	603	497	2*	Harold E. Foster
1945	10	11	971	1003	4	8	530	598	6*	Harold E. Foster
1946	4	17	1022	1099	1	11	576	669	9	Harold E. Foster
1947	16	6	1228	1166	9	3	677	637	1	Harold E. Foster
1948	12	8	1047	1068	7	5	608	623	3*	Harold E. Foster
1949	12	10	1199	1058	5	7	623	617	7	Harold E. Foster
1950	17	5	1278	1159	9	3	701	660	2	Harold E. Foster
1951	10	12	1250	1252	7	7	790	804	4*	Harold E. Foster
1952	10	12	1280	1310	5	9	817	844	7	Harold E. Foster
1953	13	9	1447	1361	10	8	1162	1123	5	Harold E. Foster
Totals	594	341	33,174	28,827	335	238	19,649	18,132		

*Denotes share of that position. **Tied for first place but lost special playoff to Chicago (18-16). ***Scoring totals include 25-25 tie game played with DePauw (3 overtimes). A-Includes NCAA title.

ALL-TIME SERIES RECORD WITH OPPONENTS

WESTERN CONFERENCE TEAMS

Wis.	Opponent	Won
37	Illinois	42
35	Indiana	20
32	Iowa	20
26	Michigan	23
49	Minnesota	38*
44	Northwestern	23
29	Ohio State	19
34	Purdue	33
47**	Chicago***	21
13	Michigan State****	7
<hr/>		<hr/>
346		246

*Four games, 1899-1900, 1900-1901, 1901-1902, and 1902-1903, non-conference.

**One game, 1904-1905, non-conference, for western title.

***No longer in conference.

****Joined Big Ten in 1951.

WISCONSIN COLLEGES - SCHOOLS

Wis.	Opponent	Won
16	Beloit College	0
5	Carroll College	0
9	Lawrence College	1
3	La Crosse Normal	0
1	Manitowoc	0
35	Marquette University	17
1	Menasha	0
1	Milton College	0
7	Milwaukee Normal	0
2	Northwestern Coll.*	0
2	Oshkosh Normal	0
18	Ripon College	1
2	River Falls Normal	0
2	Sheboygan	0
1	Stout Institute	0
1	Stevens Point Normal	1
1	W. Superior Normal	0
2	Wayland Academy	0
<hr/>		<hr/>
109		20

*Watertown

WISCONSIN INDEPENDENTS

Wis.	Opponents	Won
1	Appleton Co. G	0
1	Fond du Lac Co. E	1
1	Hudson Co. E	0
1	La Crosse YMCA	0
3	Milw. Normal Alumni	2
1	Milwaukee A. C.	1
1	Oconto Co. F	0
1	Oshkosh YMCA	0
2	Portage Co. F	0
1	Ripon Reserves	0
1	Sheboygan YMCA	0
1	Sparta Co. G	0
1	Sun Prairie	0
0	Two Rivers AC	1
1	Wausau YMCA	0
1	West Side Milwaukee	0
1	Wisconsin Alumni	0
<hr/>		<hr/>
19		5

MIDWESTERN COLLEGES - SCHOOLS

Wis.	Opponent	Won
2	Armour Institute	0
1	Ball State Teachers	0
1	Bradley Tech	0
0	Buchland Guards	1
11	Butler U.	6
5	Carleton College	1
0	Chicago YMCA	1
1	Coe College	0
1	Creighton	0
0	DePaul U. (Chicago)	3
6*	DePauw U. (Indiana)	0
1	Detroit U.	0
1	Dubuque YMCA (Iowa)	0
1	Duluth YMCA (Minn.)	0
2	Franklin College	3
3	Grinnel College	0
2	Hamline (St. Paul)	0
1	Highland Park College	0
1	Iowa State College	0
1	James Milliken U.	0
1	Kansas State	1
3	Knox College	0
3	Lombard College	0
1	Lewis Institute	0
2	Loyola (Chicago)	3
1	Lare Forest	0
4	Missouri U.	1
6	Notre Dame	11
2	Nebraska Wesleyan	0
4	Nebraska University	2
1	Monmouth College	0
2	North Dakota U.	0
1	N. W. Coll., Naperville	0
0	North Dakota State	1
1	Oklahoma University	2
0	Oberlin	1
1	Parsons College (Ia.)	0
1	St. Louis U.	1
1	South Dakota Univ.	0
1	South Dakota State	0
0	Sioux City YMCA (Ia.)	1
3	Wabash	0
1	Washburn (Kansas)	0
1	Washington (St. Louis)	0
1	Xavier (Ohio)	0
<hr/>		<hr/>
83		40

*Does not include 25-25 tie game

SOUTHERN COLLEGES-SCHOOLS

Wis.	Opponent	Won
1	Orkansas State	0
2	Maryland Univ	0
2	Loyola of the South	0
<hr/>		<hr/>
5		0

WESTERN COLLEGES - SCHOOLS

Wis.	Opponent	Won
1	California U.	3
1	Brigham Young U.	0
1	Oregon State	1
1	Southern Calif.	1
0	Stanford	1
1	*Washington State	0
2	U.C.L.A.	0
1	San Jose State	0
1	Oregon U.	1
<hr/>		<hr/>
9		7

EASTERN COLLEGES - SCHOOLS

Wis.	Opponent	Won
0	City College N. Y.	1*
0	Columbia Univ.	2
1*	Dartmouth	1
1	Harvard	0
1*	Navy	0
2	Pennsylvania	0
5*	Pittsburgh	3
1	Princeton	0
1	Rochester Univ.	0
1	Rutgers	0
0	Yale	1
1	Syracuse	0
<hr/>		<hr/>
14		8

SERVICE TEAMS

Wis.	Opponent	Won
2	Camp Grant	1
2	Great Lakes	11
1	Iowa Pre-Flight	0
1	Traux Field (Mad.)	0
1	DePauw Pre-Flight	0
<hr/>		<hr/>
7		12

CANADIAN TEAMS

Wis.	Opponent	Won
1	Western Ontario	0
<hr/>		<hr/>
1		0

EASTERN INDEPENDENTS

Wis.	Opponents	Won
0	Institute A. C.	1
0	Washington Cont. Co. F.	1
0	New York Co. E	1
1	Sharon	0
<hr/>		<hr/>
1		3

*Includes single game in 1941 and 1947 NCAA tournaments.

COMBINED SERIES TOTAL

Wis.	Opponent	Won
346	Western Conference	246
109	Wisconsin Schools	20
19	Wisconsin Independent	5
83	Midwestern Schools	40
5	Southern Schools	0
9	Western Schools	7
14	Eastern Schools	8
7	Service Teams	12
1	Eastern Independent	3
1	Canadian Schools	0
<hr/>		<hr/>
594		341

WESTERN CONFERENCE TEAM CHAMPIONS

Year	Team Champion	Won	Lost	1922	Purdue	8	1	1938	Purdue	10	2
1906	Minnesota	7	1	1923	Iowa-Wisconsin	11	1	1939	Ohio State	10	2
1907	Chicago-Wis.-Minn.	6	2	1924	Wis.-Ill.-Chicago	8	4	1940	Purdue	10	2
1908	Chicago	8	1	1925	Ohio State	11	1	1941	Wisconsin	11	1
1909	Chicago	12	0	1926	Ind.-Iowa-Mich.-			1942	Illinois	13	2
1910	Chicago	9	3		Purdue tied	8	4	1943	Illinois	12	0
1911	Purdue-Minnesota	8	4	1927	Michigan	10	2	1944	Ohio State	10	2
1912	Wisconsin-Purdue	12	0	1928	Indiana-Purdue	10	2	1945	Iowa	11	1
1913	Wisconsin	11	1	1929	Mich.-Wisconsin	10	2	1946	Ohio State	10	2
1914	Wisconsin	12	0	1930	Purdue	10	0	1947	Wisconsin	9	3
1915	Illinois	12	0	1931	Northwestern	11	1	1948	Michigan	10	2
1916	Wisconsin	11	1	1932	Purdue	11	1	1949	Illinois	10	2
1917	Illinois-Minnesota	10	2	1933	O.S.U.-Northwestern	10	2	1950	Ohio State	11	1
1918	Wisconsin	9	3	1934	Purdue	10	2	1951	Illinois	13	1
1919	Minnesota	10	2	1935	Ill.-Wis.-Purdue	9	3	1952	Illinois	12	2
1920	Chicago	11	2	1936	Indiana-Purdue	11	1	1953	Indiana	17	1
1921	Mich.-Wis.-Purdue	8	4	1937	Illinois-Minn.	10	2				

WESTERN CONFERENCE SCORING RECORDS

TEAM RECORDS

Most points for season (18 games)—1452, by Indiana, 1953. For 14 games—1035, by Indiana, 1952. For 12 games—798, by Illinois, 1950. For 15 games—721, by Iowa in 1942.

Most points in single game—113, by Indiana (vs. Purdue, Feb. 23, 1953). 103—by Iowa (vs. Chicago, Feb. 5, 1944).

Most points in single game for both teams—191 (Indiana 113, Purdue 78, Feb. 23, 1953).

Most field goals for season (18 games)—531, by Illinois, 1953. For 14 games—380, by Illinois, 1952. For 12 games—325, by Illinois, 1943. For 15 games—288, by Indiana, 1942.

Most field goals single game—45, by Iowa (vs. Chicago, Feb. 5, 1944). 43, by Indiana (vs. Purdue, Feb. 23, 1953).

Most free throws for season (18 games)—442, by Indiana, 1953. For 14 games—281, by Indiana, 1952. For 12 games—221, by Ohio State, 1950. For 15 games—161, by Northwestern, 1942.

Most free throws single game—42, by Indiana (vs. Purdue, Jan. 19, 1953). 40 by Wisconsin (vs. Minnesota, Jan. 12, 1953).

Best field goal shooting average for season—368 (by Northwestern in 1951, 14 games, 368 goals in 1001 attempts). For 18 games—360 (by Minnesota in 1953, 461 goals in 1282 attempts). For 12 games—349, (by Ohio State, 1950, 283 goals in 812 attempts).

Best field goal shooting average for single game— .611, by Iowa (vs. Northwestern, Feb. 28, 1953, 38 goals in 62 attempts). **Note**—Purdue hit .507 vs. Minnesota, Feb. 19, 1951, on 35 of 69 attempts).

Best free throwing percentage for season— .735, (by Minnesota in 1951, 14 games, made 172 of 234 attempts). .699, (by Indiana, in 1953, 18 games, made 442 of 632 attempts). .688 (by Iowa in 1942, 15 games, made 155 of 227 attempts). .679 (by Purdue in 1949, 12 games, made 209 of 308 attempts).

Best free throwing percentage for single game— .923 (by Minnesota vs. Michigan, Feb. 26, 1951, made 24 of 26 attempts). .905 (by Indiana vs. Northwestern, Feb. 16, 1952, made 38 of 42 attempts). .870 (by Minnesota vs. Northwestern, in 1953, made 20 of 23 attempts).

INDIVIDUAL RECORDS

Most points for season (18 games)—459, by Don Schlundt, Indiana, in 1953 (142 fg, 175 ft.). For 14 games—364, by Charles Darling, Iowa in 1952 (132 fg, 100 ft.). For 12 games—272, by Murray Wier, Iowa, in 1948 (107 fg, 58 ft.). For 15 games—242, by John Kotz, Wisconsin in 1942 (95 fg, 52 ft.).

Most points for single game—43, by Dick Ives, Iowa vs. Chicago, Feb. 5, 1944 (19 fg, 5 ft.).

Most field goals for season (18 games)—145, by Paul Ebert, Ohio State, 1953. For 14 games—132, by Charles Darling, Iowa, in 1953. For 12 games—111, by Andy Phillip, Illinois, in 1943. For 15 games—95, by Johnny Kotz, Wisconsin, 1942.

Most field goals for single game—19, by Dick Ives, Iowa, vs. Chicago, Feb. 5, 1944.

Most free throws single season (18 games)—175, by Don Schlundt, 1953. For 14 games—100, by Charles Darling, Iowa, 1952. For 12 games—91, by Dick Schnittker, Ohio State, 1950. For 15 games—58, by Otto Graham, Northwestern, 1942.

Most free throws single game—17, by Don Schlundt, Indiana (vs. Michigan, Jan. 3, 1953). 16, by Tony Jaros, Minnesota, (vs. Wisconsin, Mar. 4, 1946) and by Charles Darling, Iowa (vs. Minnesota, Jan. 19, 1952).

Most free throws attempted in single game (under new 1-1 rule)—29, by Jack Runyan, Purdue (vs. Michigan, Mar. 2, 1953). 24 by Paul Morrow, Wisconsin (vs. Michigan, Feb. 21, 1953). Before 1-1 rule—21, by Charles Darling, Iowa (vs. Minnesota, 1952).

Most free throws missed in single game (under new 1-1 rule)—15, by Jack Runyan, Purdue (vs. Michigan, Mar. 2, 1953). Before 1-1 rule—10, by Max Morris, Northwestern (vs. Minnesota, Feb. 8, 1946).

Best four year scoring record—655 points, by Don Rehfeldt, Wisconsin, 1945-50.

Best three year scoring record—716, Charles Darling, Iowa, 1950-52.

Best two year scoring record—706, by Paul Ebert, Ohio State, 1952-53, 703 by Don Schlundt, Indiana, 1952-53.

Best field goal shooting averages for season (100 or more attempts)— .457, by Dick Farley, Indiana, 1953 (made 69 of 151 attempts). .436, by Don Schlundt, Indiana, 1953, 142 or 326 attempts).

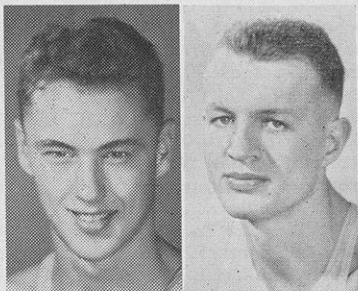
Best field goal shooting average for single game (10 or more attempts)— .800, by Dick Farley, Indiana (vs. Illinois, Feb. 28, 1953, made 8 of 10 attempts). .750 by Dick Means, Minnesota (vs. Wisconsin, Jan. 16, 1950, made 9 of 12 attempts). .750, by Bob Clifton, Iowa (vs. Northwestern, made 9 of 12 attempts).

Best free throw average for season— .886, by Meyer Skoog, Minnesota, 1951 (made 31 of 35 attempts). .875, by Don Page, Wisconsin, 1950 (made 28 of 32 attempts). .875 by Bill Tosheff, Indiana, 1951 (made 42 of 48 attempts).

Best free throw average for single game—1.000, by Dick Schnittker, Ohio State (13 of 13 attempts vs. Indiana, Feb. 6, 1950). **Note**—Don Rehfeldt, Wisconsin, made all 9 attempts vs. Minnesota, Mar. 4, 1950.

Most consecutive free throws in season—28, by Bill Tosheff, Indiana, 1951.

WISCONSIN'S MOST VALUABLE PLAYERS



Nicholas

Rehfeldt

- 1941—Gene Englund, center (also won Big Nine Tribune award)
- 1942—Johnny Kotz, forward (also won Big Nine Tribune award)
- 1943—Bob Sullivan, forward
- 1944—Ray Patterson, center
- 1945—Ray Patterson, center
- 1946—Bob Cook, forward
- 1947—Glen Selbo, guard (also won Big Nine Tribune award)
- 1948—Bob Cook, forward
- 1949—Don Rehfeldt, center
- 1950—Don Rehfeldt, center (also won Big Nine Tribune award)
- 1951—Ab Nicholas, guard
- 1952—Ab Nicholas, guard
- 1953—Charles Siefert, guard

WISCONSIN ALL-AMERICAN PLAYERS

- 1930—Harold "Bud" Foster, center
- 1941—Gene Englund, center
- 1942—Johnny Kotz, forward
- 1950—Don Rehfeldt, center
- 1952—Ab Nicholas, guard

WISCONSIN ALL-CONFERENCE PLAYERS

- 1907—Charles Scribner, forward*
- 1907—Arthur Frank, guard*
- 1908—Hugh Harper, guard*
- 1908—Helfner Swenholt, forward*
- 1911—Wallie Scoville, guard
- 1912—Wallie Scoville, guard
- 1912—Otto Stangel, forward
- 1913—John Van Riper, guard*
- 1913—Gene Van Ghent, center*
- 1913—Carl Harper, guard*
- 1913—Allen Johnson, forward*
- 1914—Gene Van Ghent, center*
- 1914—Carl Harper, guard*
- 1915—George Levis, forward
- 1916—George Levis, forward
- 1916—William Chandler, center
- 1916—Harold Olson, guard
- 1917—William Chandler, center
- 1917—Harold Olson, guard
- 1917—Paul Meyers, guard
- 1923—Gus Tebell, guard
- 1923—Rollie Williams, guard
- 1924—Marshall Diebold, guard
- 1925—Marshall Diebold, guard
- 1928—George Hotchkiss, guard
- 1929—Harold E. Foster, center*
- 1929—Ed Chmielewski, guard*
- 1930—Harold E. Foster, center*
- 1930—Ed Chmielewski, guard
- 1934—Rolf "Chub" Poser, guard
- 1935—Rolf "Chub" Poser, guard
- 1935—Gil McDonald, guard
- 1938—Hod Powell, forward
- 1940—Gene Englund, center
- 1941—Gene Englund, center
- 1941—John Kotz, forward
- 1942—John Kotz, forward
- 1943—Ray Patterson, center (2nd)
- 1944—Ray Patterson, center (2nd)
- 1944—Russ Wendland, guard (2nd)
- 1946—Bobby Cook, forward (nm)
- 1947—Glen Selbo, guard
- 1947—Walt Lautenbach, guard
- 1947—Bob Cook, forward
- 1948—Bob Cook, forward
- 1949—Don Rehfeldt, center
- 1950—Don Rehfeldt, center
- 1951—Ab Nicholas, guard
- 1952—Ab Nicholas, guard

*Also All-Western choice.

WISCONSIN COACHING STAFF

HEAD BASKETBALL COACH—HAROLD E. "BUD" FOSTER

Birthdate—May 30, 1906

THREE Western Conference championships, one National Collegiate Athletic Association title, and three runners-up in Big Ten play during the past 19 years of varsity coaching are the highlights in the career of Harold E. "Bud" Foster, University of Wisconsin head basketball coach.

Born in Newton, Kansas, May 30, 1906, Bud had the distinction of being the heaviest baby ever born in that state; he tipped the scales at 13¾ pounds.

Because Newton did not offer any high school facilities, Bud prepped at Masin City, Iowa, high school, then went to Chicago. He entered Wisconsin in 1926, studying economics and playing basketball. He was all-conference center in the seasons of 1929 and 1930; also earned All-American honors in 1930.

Graduating in June, 1930, Foster played professional basketball with Chicago and Oshkosh (All-Stars) teams, selling seeds for an Oshkosh firm during the off-seasons. In 1933, he was named freshman coach at Wisconsin and stepped into the varsity coaching spot when Dr. Walter E. Meanwell resigned in 1934.

Foster's initial team tied for the conference crown in 1935, then spent the next five years in the conference second division. But, in 1941, he welded together a fine group of players which, after a poor start, won their last 15 games to snare both Big Ten and NCAA championships. His last championship team with in 1946-47 and these cagers also finished third in the Eastern NCAA regional meet in 1947.



Foster

— W —

ASSISTANT BASKETBALL COACH—FRED "FRITZ" WEGNER

Birthdate—November 24, 1912

LIKE FOSTER, Fred "Fritz" Wegner, assistant coach, is a graduate of Wisconsin and also played on the Oshkosh All-Star pro cage teams. Fred, who is regarded as one of the keenest scouts in collegiate basketball and an ideal assistant coach, played guard on the Wisconsin varsity teams of 1934-35-36; also was first baseman on the baseball teams of those same years. He starred in basketball, baseball and track at Oshkosh high school.



Wegner

Fred came to Wisconsin as an assistant coach in basketball one year after his graduation, later on adding the baseball duties in 1936 as an assistant to Art Mansfield.

During the past seven summers, Fred has been in charge of the boys' baseball association in Madison, with approximately 1,000 youngsters competing in the various age groups.

— W —

ASSISTANT BASKETBALL COACH—ART RIZZI

ART RIZZI, junior varsity coach, like Foster and Wegner, is a graduate of Wisconsin, where he won his major "W" on the '46-'47 team as a reserve forward. He served as a coach on the Wisconsin frosh squad of '47-'48 and returned to the staff in 1951. During his playing days Rizzi was the smallest man on the team, measuring only five feet six and a half inches and weighing but 150 pounds. He graduated from North Division high school in Milwaukee in 1941, where he competed in football and basketball for three years. Then he attended Carroll college where he was awarded two letters in football and two in basketball. During college he studied civil engineering.



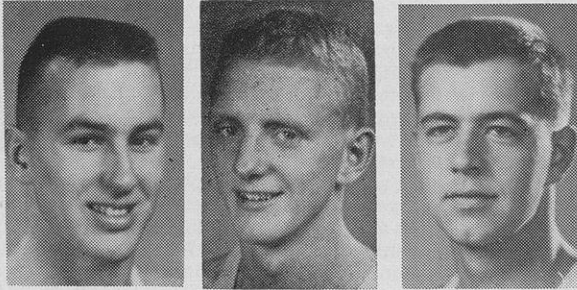
Rizzi

BADGER BIOGRAPHIES

ROBERT J. BADURA (43)

Guard . . . Sophomore . . . 6-2 . . . 208 . . . 20
Kohler, Wis.

Was a member of Badger team two years ago . . . one of finest athletes ever developed at Kohler High School . . . outstanding play led his team to state tournament in 1950 . . . scored 50 points in three games . . . rated an all-state berth at guard that year . . . should give Badgers needed depth at guard position this year . . . birth date was July 7, 1933.



Badura

Cable

Clinton

RICHARD W. CABLE (39)

Forward-Guard . . . junior . . . 6-1 . . . 171 . . . 20
Stevens Point, Wis.

Hails from P. J. Jacobs High School . . . rates as the school's outstanding basketball player as a senior . . . has won major "W" the past two years . . . one of the outstanding players in the Big Ten last year . . . ranked 16th in conference scoring with 237 points . . . established a Wisconsin field goal shooting percentage season mark of .391 and a Badger Big Ten record of .368 in his freshman season . . . scored 301 points last year . . . career total is 437 points . . . made 12 free throws against Michigan for field house record last season . . . birth date was April 6, 1933.

JAMES E. CLINTON (52)

Forward . . . junior . . . 6-5 . . . 212 . . . 22
Milwaukee, Wis.

A standout performer on the 1950-51 Badger cage squad . . . illness prevented his playing the past two seasons . . . one of the nation's leading rebounders in his sophomore year . . . totaled 344 in 22 games . . . scored 263 points, fourth highest ever totalled by a sophomore in Badger history . . . made 11 field goals in 17 attempts against San Jose State in field house on Dec. 28, 1950 . . . hails from North High School in Milwaukee . . . birth date was April 18, 1931.

MIKE C. DALY (7)

Forward . . . senior . . . 5-7 . . . 147 . . . 22
Wisconsin Rapids, Wis.

Smallest man on varsity squad . . . won major "W" last year . . . used mainly as a sport player . . . scored 11 points, all on free throws . . . attempted only 11 free throws during season . . . captained 1951 Wisconsin freshman team . . . a star in basketball, track, and baseball in high school . . . entered in School of Commerce . . . birth date was May 22, 1931.

1953-54 WISCONSIN B

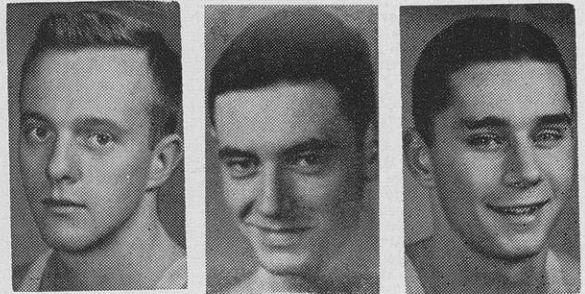
No.	Name of player	Pos.	Ht.	W
43	n-Badura, Robert J.	G	6-2	208
39	**Cable, Richard W.	F-G	6-1	171
52	*Clinton, James E.	F	6-5	212
7	#Daly, Mike C.	F	5-7	147
53	*Folz, Daniel J. (a)	C	6-6½	212
6	#Godfrey, Roger K.	G	5-10	160
51	n-Hinnrichs, Alan W.	C	6-5	215
45	n-Jorgensen, Richard	G	5-11	166
41	n-Kardach, John	G	5-10	188
33	n-Mack, Thomas A.	F	5-10	155
48	#Manning, John J.	F	6-1	177
36	n-Miller, Richard E.	G	5-11	166
54	**Morrow, J. Paul	C	6-7½	222
31	n-Mueller, Curtis F.	F	6-3	177
42	n-Parker, John E.	C	6-5½	199
40	n-Schachte, Norbert G.	F	6-2	188
8	##Spika, Daniel J.	G		188
44	**Stracka, Anthony J.	F	6-2	191
5	##Turner, Robert L.	G	5-11	177
50	#Weber, Robert J.	G	6-6	199
24	**Weisner, Ronald	F-G	5-9	177
38	n-Winter, Richard T.	F	6-1	155

a—second semester sophomore. *—each denotes major numeral winner.

DANIEL J. FOLZ (53)

Center . . . sophomore . . . 6-6½ . . . 212 . . . 19
Milwaukee, Wis.

Product of North High . . . a second semester sophomore, entering university in February, 1952 . . . performed ably as replacement for Morrow last year winning major "W" . . . scored 37 points . . . established all-Milwaukee single game scoring record of 41 points while in high school . . . birth date was August 4, 1934.



Daly

Folz

Godfrey

ROGER K. GODFREY (6)

Guard . . . senior . . . 5-10 . . . 160 . . . 21
Wauwatosa, Wis.

Expected to provide reserve strength for Badgers at guard . . . a major letterman last year . . . previously won numerals and a junior "W" . . . was a star for Wauwatosa High School, rating all-suburban guard his senior year . . . enrolled in School of Commerce . . . birthdate was May 20, 1931.

ALAN W. HINNDRICHS (51)

Center . . . junior . . . 6-5 . . . 215 . . . 19
Milwaukee, Wis.

Hails from Rufus King High School where he was a standout in basketball and golf . . . will give Badgers depth at center spot . . . only previous award was numerals in freshman year . . . enrolled in Pre-commerce . . . birth date was April 11, 1934.

BASKETBALL ROSTER

Wt.	Age	Class	Hometown
208	20	Soph.	Kohler
171	20	Jun.	Stevens Point
212	22	Jun.	Milwaukee
147	22	Sen.	Wisconsin Rapids
212	19	Soph.	Milwaukee
160	21	Sen.	Wauwatosa
215	19	Jun.	Milwaukee
160	19	Soph.	Neenah
181	20	Soph.	Stevens Point
150	19	Soph.	Madison
178	21	Jun.	Janesville
168	19	Soph.	Wheeling, W. Va.
220	21	Sen.	St. Croix Falls
174	19	Soph.	Prairie du Sac
193	19	Soph.	Madison
182	19	Soph.	Madison
180	22	Sen.	LaCrosse
196	21	Sen.	Hartford
175	20	Sen.	Belvidere, Ill.
193	21	Sen.	Lodi
170	21	Sen.	Elgin, Ill.
158	19	Soph.	Antigo

major letter won. #—each denotes junior "W" award. n—fresh

RICHARD JORGENSEN (45)

Guard . . . sophomore . . . 5-11 . . . 160 . . . 19
Neenah, Wis.

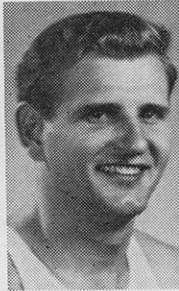
A standout on last year's freshman squad . . . scored 7 points against varsity in annual frosh-varsity clash . . . father coaches Neenah High School basketball teams . . . was an all-state selection in 1952 state tournament . . . excelled in team play . . . scored 45 points in three games to rank 4th in scoring . . . birth date was April 12, 1934.



Hinrichs



Jorgenson



Kardach

JOHN KARDACH (41)

Guard . . . sophomore . . . 5-10 . . . 181 . . . 20
Stevens Point, Wis.

A member of 1952 freshman team . . . teammate of Cable's in high school . . . an All-Wisconsin Valley Conference guard his junior and senior years . . . won eight letters in three sports, basketball, football and track . . . birthdate was May 21, 1933.

THOMAS A. MACK (33)

Forward . . . sophomore . . . 5-10 . . . 150 . . . 19
Madison, Wis.

Won freshman numerals last season . . . competed in three sports at West High in Madison . . . won three letters each in basketball and track . . . played on West 1951 Big Eight Conference champs . . . team lost to Wisconsin Rapids in state final that year . . . scored 18 points in 3 games of state meet . . . birth date was May 15, 1934.

BADGER BIOGRAPHIES

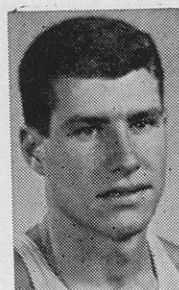
JOHN J. MANNING (48)

Forward . . . junior . . . 6-1 . . . 178 . . . 22
Janesville, Wis.

Won junior "W" as member of last year's squad . . . an All-Big Eight Conference player at forward in 1950 . . . also named that league's most valuable player that year . . . is enrolled in Journalism . . . hobby is collecting phonograph records . . . birth date was Oct. 20, 1931.



Mack



Manning



Miller

RICHARD E. MILLER (36)

Guard . . . sophomore . . . 5-11 . . . 168 . . . 19
Wheeling, W. Va.

One of three out-of-state boys on this year's team . . . rated as a good prospect . . . scored 17 points in last year's varsity-freshman game . . . attended Central Catholic High School in Wheeling . . . won 12 letters in football, basketball and baseball . . . was All-City in football and basketball 3 years . . . ambition is to coach . . . birth date was February 21, 1934.

J. PAUL MORROW (54)

Center . . . senior . . . 6-7½ . . . 220 . . . 21
St. Croix Falls, Wis.

Has won major letter last 2 seasons . . . tallest man on team . . . ranked 8th in conference scoring last year with 275 points . . . made 15 of 24 free throws in game against Michigan last year . . . established school record of scoring 91 free throws in a Big Ten season . . . set state high school scoring mark of 79 points in 3 games in leading St. Croix Falls to 1950 championship . . . birth date was July 16, 1932.

CURTIS N. MUELLER (31)

Forward . . . sophomore . . . 6-3 . . . 174 . . . 19
Prairie du Sac, Wis.

Won numerals as member of last year's freshman team . . . was a standout in all sports in high school . . . won 15 letters . . . played on 3 championship football and basketball teams . . . also participated in baseball and track . . . birth date was July 17, 1934.

BADGER BIOGRAPHIES

JOHN E. PARKER (42)

Center . . . sophomore . . . 6-5½ . . . 193 . . . 19
Madison, Wis.

Hails from West High School . . . won numerals as member of last year's freshman team . . . was a regular two years at West High . . . was member of 1951 West team that was second in state meet . . . scored 22 points in 3 games in tournament play . . . entered in Pre-commerce . . . birth date was March 30, 1934.



Morrow



Mueller



Parker

NORBERT G. SCHACHTE (40)

Forward . . . sophomore . . . 6-2 . . . 182 . . . 19
Madison, Wis.

From Central High School in Madison . . . an All-City performer his senior year . . . won two letters each in football, basketball, and baseball . . . did some pitching on baseball team . . . won numerals on freshman team last year . . . birth date was July 9, 1934.



Schachte



Spika



Stracka

DANIEL J. SPIKA (8)

Guard . . . senior . . . 6-0 . . . 180 . . . 22
La Crosse, Wis.

Has won junior "W" letters last two seasons . . . prepped at La Crosse Aquinas High School . . . won 11 letters performing in football, basketball, and tennis . . . was on Aquinas' State Catholic basketball champions in 1949 . . . was All-City, All Diocesan, and All-State in 1949 . . . ambition is to be a "successful" coach . . . birth date was December 26, 1930.

ANTHONY J. STRACKA (44)

Forward . . . senior . . . 6-2 . . . 196 . . . 21
Hartford, Wis.

Has won 2 major "W" awards . . . tallied 185 points in Big Ten play last year . . . has a collegiate record of 305 points in two years . . . a good rebounder . . . was a standout high school star at Hartford . . . played end on South All-Star team in 1950 high school football classic . . . won major "W" the past two seasons on track team . . . his specialty is the weights . . . a phy-ed major . . . birth date was January 24, 1932.

ROBERT L. TURNER (5)

Guard . . . senior . . . 5-11 . . . 175 . . . 20
Belvidere, Ill.

Won junior "W" the past two seasons as member of varsity . . . was a three sport man in high school . . . won 8 letters . . . captained baseball and basketball teams his senior year . . . enrolled in the school of pharmacy . . . birth date was December 25, 1932.

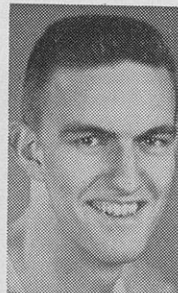
ROBERT J. WEBER (50)

Guard . . . senior . . . 6-6 . . . 193 . . . 21
Lodi, Wis.

Rejected by army just prior to start of school . . . too tall . . . won major "W" last year, performing at all three positions . . . scored 44 points during season . . . set many scoring records as a high school cager . . . once scored 45 points in a single game . . . won 11 letters in three sports at Lodi . . . birth date was May 25, 1932.



Turner



Weber



Weisner

RONALD WEISNER (24)

Forward and guard . . . senior . . . 5-9 . . . 170 . . . 21
Elgin, Ill.

Winner of major "W" last two years as member of Badger varsity . . . used as a sport player . . . scored 108 points last year . . . field goal average was .347 . . . was an All State player for Elgin in 1950 . . . also was All Conference . . . paced Elgin to championship of Illinois' Big Eight Conference . . . birth date was December 16, 1931.

RICHARD T. WINTER (38)

Forward . . . sophomore . . . 6-1 . . . 158 . . . 19
Antigo, Wis.

Won numerals as member of last years freshman team . . . won 2 letters in basketball in high school . . . played center on the football team . . . also participated in golf . . . youngest player on team . . . birth date was August 21, 1934.

All-Time Scores and Captains in Wisconsin Basketball

1898-1899
 Coach: Dr. J. C. Elsom Capt.: W. Hirschberg
 Date Played at Wis. Opponent
 Jan. 21 Milwaukee 15 Milw. Norm. Alum. 25
 Feb. 18 Appleton 18 Lawrence 20
 Mar. 4 Madison 10 Milw. Norm. Alum. 13

1899-1900
 Coach: Dr. J. C. Elsom Capt.: W. Hirschberg
 Date Played at Wis. Opponent
 Feb. 17 Minn'polis 15 Minnesota 17
 Feb. 23 B'ver Dam 25 Wayland Academy 15

1900-1901
 Coach: Dr. J. C. Elsom Capt.: W. Hirschberg
 Date Played at Wis. Opponent
 Jan. 18 B'ver Dam 35 Wayland Academy 22
 Feb. 23 Minn'polis 15 Minnesota 42

1901-1902
 Coach: Dr. C. J. Elsom Capt.: Henry Helmholtz
 Date Played at Wis. Opponent
 Dec. 13 Chicago 32 Lewis Institute 21
 Dec. 14 Chicago 20 Armour Institute 14
 Dec. 27 Milwaukee 37 Milwaukee Normal 18
 Jan. 1 Milwaukee 20 Yale 35
 Jan. 4 Milwaukee 48 Milw. Norm. Alum. 12
 Jan. 11 LaCrosse 59 LaCrosse YMCA 16
 Jan. 25 Appleton 51 Lawrence 20
 Feb. 15 Sun Prairie 18 Sun Prairie 9
 Feb. 22 Minn'polis 10 Minnesota 30
 Mar. 7 Ripon 21 Ripon 28

1902-1903
 Coach: Dr. J. C. Elsom Capt.: John C. Potter
 Date Played at Wis. Opponent
 Nov. 28 Sheboygan 45 Sheboygan YMCA 16
 Dec. 19 Dubuque 34 Dubuque YMCA 14
 Feb. 21 Minn'polis 11 Minnesota 33
 Feb. 28 Fond ' Lac 17 Fond du Lac Co. E 21
 Mar. 6 Duluth 42 Duluth YMCA 16
 Mar. 7 Superior 27 W. Superior Norm. 9
 Mar. 13 Wausau 37 Wausau YMCA 33

1903-1904
 Coach: Dr. J. C. Elsom Capt.: H. Schofield
 Date Played at Wis. Opponent
 Nov. 27 Sheb'gan* 26 Sheboygan 24
 Nov. 28 Milwaukee 18 Milwaukee AC 30
 Dec. 19 Chicago 19 Chicago YMCA 62
 Dec. 29 Milwaukee 27 West H.S., Milw. 20
 Feb. 5 Oshkosh 39 Oshkosh YMCA 28
 Feb. 6 Fond ' Lac 25 Fond du Lac Co. E 21
 Feb. 20 Madison 35 Milwaukee AC 13
 Feb. 27 Watertown 41 N'west'n, Watert'n 31
 Mar. 1 Grinnell 30 Grinnell 28
 Mar. 2 Des Moines 29 Highland Pk. Coll. 21
 Mar. 3 Sioux City 16 Sioux City YMCA 44
 Mar. 4 Linc'n, Neb. 47 Neb. Wesleyan 32
 Mar. 5 Linc'n, Neb. 22 Nebraska 25
 Mar. 11 Madison** 22 Co. G, Madison 15
 Mar. 18 Portage 48 Co. F, Portage 17

*Game ended in a tie (24-24) but Sheboygan refused to play off the tie and consequently according to basketball rules lost the game.
 **Played by varsity seconds.

1904-1905
 Coach: Emmett Angell Capt.: Chris Steinmetz
 Date Played at Wis. Opponent
 Dec. 2 Sparta 75 Co. G, Sparta 10
 Dec. 3 LaCrosse 54 LaCrosse 16
 Dec. 27 Sheboygan 45 Sheboygan 28
 Dec. 28 Appleton 26 Co. G, Appleton 12
 Dec. 29 Oconto 55 Co. F, Oconto 17
 Dec. 30 Two Rivers 30 Two Rivers AC 31
 Jan. 7 Madison 80 Beloit 10
 Jan. 12 Columbus 22 Ohio State 25
 Jan. 13 Rochester, 26 Rochester Univ. 17
 N. Y.

Jan. 14 Schenectady, N. Y. 22 Wash. Continentals 26
 Jan. 16 Albany 27 Co. E, New York 34
 Jan. 17 New York 15 Columbia 21
 Jan. 18 Newark 20 Institute AC 34
 Jan. 19 Sharon, Pa. 41 Sharon AC 31
 Jan. 20 Fremont, O. 31 Buchland Guards 34
 Jan. 21 Oberlin 31 Oberlin 41
 Mar. 3 Portage 52 Co. F, Portage 28
 Mar. 17 Chicago 29 Chicago 24

1905-1906
 Coach: Emmett Angell Capt.: James Bush
 Date Played at Wis. Opponent
 Dec. 14 Manitowoc 35 Manitowoc 25
 Dec. 15 Menasha 30 Menasha 22
 Dec. 16 Oshkosh 30 Oshkosh Normal 21

Jan. 13 Madison 25 Lawrence 20
 Jan. 19 Chicago 37 Armour Institute 15
 Jan. 20 Lafayette 34 Purdue 14
 Feb. 3 Madison 31 Purdue 15
 Feb. 23 Madison 31 Minnesota 24
 Mar. 2 Chicago 18 Chicago 35
 Mar. 3 Champaign 36 Illinois 32
 Mar. 9 Madison 22 Chicago 19
 Mar. 16 Hudson 31 Co. C, Hudson 20
 Mar. 17 Minn'polis 10 Minnesota 16

1906-1907
 Coach: Emmett Angell Capt.: Chas. Scribner
 Date Played at Wis. Opponent
 Dec. 8 Madison 38 Milton College 14
 Dec. 14 Madison 41 Ripon 20
 Jan. 4 Madison 9 Columbia 30
 Jan. 11 Menomonie 29 Stout 19
 Jan. 12 Minn'polis 11 Minnesota 18
 Jan. 18 Beloit 38 Beloit 11
 Jan. 19 Urbana 22 Illinois 17
 Jan. 25 Lafayette 33 Purdue 24
 Jan. 26 Chicago 14 Chicago 24
 Feb. 1 Madison 47 Illinois 13
 Feb. 21 Madison 35 Nebraska 31
 Mar. 6 Madison 22 Chicago 11
 Mar. 9 Madison 31 Minnesota 20
 Mar. 15 Madison 37 Purdue 10

1907-1908
 Coach: Emmett Angell Capt.: Harlan Rogers
 Date Played at Wis. Opponent
 Dec. 14 Madison 38 Beloit 13
 Dec. 20 Madison 42 Alumni 22
 Jan. 17 Lafayette 28 Purdue 24
 Jan. 18 Champaign 28 Illinois 20
 Jan. 23 Madison 34 Purdue 16
 Jan. 25 Madison 37 Minnesota 13
 Jan. 31 Madison 29 Chicago 17
 Feb. 28 Chicago 19 Chicago 24
 Mar. 3 Madison 34 Nebraska 4
 Mar. 7 Minn'polis 34 Minnesota 14
 Mar. 9 Madison 27 Illinois 14
 Mar. 12 Madison 16 Chicago 18

1908-1909
 Coach: Haskell Noyes Capt.: H. Swenholt
 Date Played at Wis. Opponent
 Dec. 19 Madison 53 Lawrence 13
 Jan. 8 Madison 36 Ripon 10
 Jan. 13 Madison 52 Beloit 4
 Jan. 15 Lafayette 20 Purdue 23
 Jan. 16 Champaign 19 Illinois 28
 Jan. 23 Madison 20 Illinois 10
 Jan. 30 Minn'polis 14 Minnesota 18
 Feb. 6 Madison 15 Chicago 18
 Feb. 27 Madison 29 Purdue 6
 Mar. 1 Madison 30 Iowa 18
 Mar. 6 Chicago 4 Chicago 14
 Mar. 9 Madison 37 Minnesota 14

1909-1910
 Coach: Haskell Noyes Capt.: William Witt
 Date Played at Wis. Opponent
 Dec. 15 Madison 24 Beloit 9
 Dec. 17 Madison 32 Ripon 5
 Jan. 8 Madison 55 Northwestern 9
 Jan. 15 Madison 28 Illinois 16
 Jan. 21 Urbana 14 Illinois 34
 Jan. 22 Lafayette 17 Purdue 29
 Jan. 28 Chicago 14 Chicago 16
 Jan. 29 Bloom'gton 11 Indiana 13
 Feb. 5 Madison 24 Minnesota 14
 Feb. 25 Minn'polis 9 Minnesota 16
 Feb. 26 Evanston 39 Northwestern 11
 Mar. 5 Madison 11 Chicago 10
 Mar. 7 Madison 33 Indiana 8
 Mar. 12 Madison 38 Purdue 14

1910-1911
 Coach: Haskell Noyes Capt.: Albert Birch
 Date Played at Wis. Opponent
 Dec. 10 Madison 32 Beloit 9
 Dec. 17 Madison 43 Ripon 8
 Jan. 7 Madison 39 Lawrence 9
 Jan. 13 Lafayette 16 Purdue 34
 Jan. 14 Evanston 29 Northwestern 9
 Jan. 21 Madison 20 Illinois 9
 Jan. 28 Madison 46 Chicago 22
 Feb. 3 Madison 51 Indiana 9
 Feb. 4 Minn'polis 16 Minnesota 17
 Feb. 24 Madison 45 Purdue 17
 Mar. 1 Madison 13 Minnesota 21
 Mar. 4 Chicago 22 Chicago 24

Mar. 8 Madison 23 Northwestern 11
 Mar. 10 Bloom'gton 18 Indiana 21
 Mar. 11 Champaign 18 Illinois 21

1911-1912
 Coach: W. E. Meanwell Capt.: W. Scoville
 Date Played at Wis. Opponent
 Dec. 9 Madison 31 Beloit 18
 Dec. 16 Madison 54 Ripon 13
 Dec. 20 Beloit 20 Beloit 12
 Jan. 5 Iowa City 38 Iowa 12
 Jan. 6 Evanston 32 Northwestern 19
 Jan. 13 Madison 27 Illinois 10
 Jan. 20 Madison 22 Minnesota 12
 Jan. 27 Chicago 18 Chicago 15
 Feb. 12 Madison 30 Iowa 5
 Feb. 17 Madison 51 Indiana 10
 Feb. 24 Madison 46 Northwestern 11
 Mar. 2 Madison 34 Chicago 24
 Mar. 9 Minn'polis 29 Minnesota (OT) 26
 Mar. 15 Urbana 23 Illinois 15
 Mar. 16 Bloom'gton 32 Indiana 21

1912-1913
 Coach: W. E. Meanwell Capt.: J. Van Riper
 Date Played at Wis. Opponent
 Dec. 7 Madison 40 Ripon 13
 Dec. 12 Madison 33 Beloit 10
 Dec. 16 Madison 19 Freshmen 8
 Dec. 18 Madison 44 Lake Forest 15
 Jan. 11 Urbana 16 Illinois 15
 Jan. 13 Lafayette 25 Purdue 15
 Jan. 18 Minn'polis 19 Minnesota 11
 Jan. 21 Madison 22 Ohio State 11
 Jan. 25 Madison 31 Chicago 18
 Feb. 13 Bloom'gton 30 Indiana 19
 Feb. 15 Columbus 27 Ohio State 22
 Feb. 21 Madison 18 Illinois 13
 Feb. 25 Madison 29 Minnesota 11
 Feb. 27 Madison 48 Indiana 10
 Mar. 1 Madison 22 Purdue 19
 Mar. 7 Chicago 10 Chicago 23

1913-1914
 Coach: W. E. Meanwell Capt.: E. Van Gent
 Date Played at Wis. Opponent
 Dec. 8 Madison 31 Frosh 19
 Dec. 13 Madison 48 Knox 15
 Dec. 18 Madison 45 Beloit 15
 Jan. 6 Madison 50 Parsons College 0
 Jan. 10 Urbana 26 Illinois 25
 Jan. 12 Bloom'gton 57 Indiana 15
 Jan. 17 Madison 28 Minnesota 7
 Jan. 24 Chicago 16 Chicago 14
 Feb. 10 Madison 38 Northwestern 9
 Feb. 13 Madison 25 Purdue (OT) 20
 Feb. 17 Evanston 33 Northwestern 26
 Feb. 20 Madison 29 Illinois 16
 Feb. 24 Madison 46 Indiana 24
 Feb. 28 Minn'polis 27 Minnesota 9
 Mar. 6 Madison 25 Chicago 18
 Mar. 10 Lafayette 27 Purdue 13

1914-1915
 Coach: W. E. Meanwell Capt.: Ernest Lange
 Date Played at Wis. Opponent
 Dec. 3 Madison 59 Frosh 19
 Dec. 11 Madison 28 Beloit 16
 Dec. 14 Madison 45 Arkansas Agric. 7
 Dec. 18 Madison 29 Lawrence 21
 Jan. 2 Milwaukee 21 Milwaukee Normal 10
 Jan. 5 Madison 41 Grinnell 19
 Jan. 9 Bloom'gton 39 Indiana 18
 Jan. 11 Lafayette 28 Purdue (OT) 24
 Jan. 16 Minn'polis 23 Minnesota 20
 Jan. 18 Madison 47 Indiana 15
 Jan. 23 Madison 19 Chicago 24
 Feb. 8 Urbana 19 Illinois 39
 Feb. 13 Madison 17 Illinois 19
 Feb. 16 Columbus 26 Ohio State 17
 Feb. 19 Madison 26 Purdue 21
 Feb. 27 Madison 31 Minnesota 7
 Mar. 6 Madison 23 Ohio State 12
 Mar. 12 Chicago 18 Chicago 30

1915-1916
 Coach: W. E. Meanwell Capt.: Mel Haas
 Date Played at Wis. Opponent
 Dec. 10 Madison 38 Beloit 11
 Dec. 15 Madison 46 Lawrence 16
 Dec. 30 Ripon* 27 Ripon 15
 Dec. 30 Ripon* 41 Ripon Reserves 7
 Dec. 31 Milw'kee** 51 Milwaukee Normal 12
 Jan. 1 Mil'kee*** 24 Milw. Norm. Alum. 18

Jan. 1	Mil'kee****	39	Milwaukee Normal	8
Jan. 3	Madison	24	Wabash	14
Jan. 8	Lafayette	33	Purdue	17
Jan. 10	Iowa City	36	Iowa (OT)	31
Jan. 15	Madison	31	Minnesota	11
Jan. 18	Madison	22	Northwestern	18
Jan. 22	Urbana	20	Illinois	27
Jan. 29	Chicago	29	Chicago	18
Feb. 14	Madison	25	Neb. Wesleyan	20
Feb. 19	Madison	34	Illinois	14
Feb. 25	Madison	35	Purdue	22
Feb. 28	Mad'n****	39	Iowa	17
Mar. 4	Minn'polis	32	Minnesota	14
Mar. 8	Madison	24	Chicago	12
Mar. 11	Evanston	24	Northwestern	21

*Varsity and varsity seconds played 1/2 of each game.
 **Varsity seconds aided by varsity in last few minutes.
 ***Varsity seconds.
 ****Varsity.
 *****Score also listed as 37-19.

1916-1917

Coach: W. E. Meanwell		Co-capt.: Geo. Levis,		
		Harold Olson		
Date	Played at	Wis.	Opponent	
Dec. 6	Madison	42	Frosh	18
Dec. 9	Madison	58	Beloit	11
Dec. 13	Madison	30	Ripon	27
Dec. 16	Madison	50	Northwest'n Coll.	21
Dec. 20	Madison	41	Lawrence	14
Dec. 21	Milwaukee	35	Milwaukee Normal "M" Club	23
Jan. 3	Ripon	24	Ripon	20
Jan. 6	Columbus	30	Ohio State	22
Jan. 8	Evanston	29	Northwestern (OT)	21
Jan. 13	Minn'polis	25	Minnesota	33
Jan. 20	Madison	25	Illinois	14
Jan. 26	Madison	13	Chicago	21
Feb. 12	Madison	23	Northwestern	15
Feb. 17	Madison	40	Ohio State	15
Feb. 24	Urbana	17	Illinois	20
Mar. 3	Chicago	25	Chicago	16
Mar. 6	Madison	29	Indiana	14
Mar. 10	Madison	16	Minnesota	13
Mar. 15	Bloom'gton	18	Indiana	16

1917-1918

Coach: Guy Lowman		Capt.: Wm. Chandler		
		Opponent		
Date	Played at	Wis.	Opponent	
Dec. 8	Madison	26	Beloit	21
Dec. 13	Madison	33	Ripon	13
Dec. 15	Madison	18	Northwest'n Coll.	13
Dec. 19	Madison	15	Marquette	14
Jan. 2	Ripon	35	Ripon	36
Jan. 5	Evanston	17	Northwestern	33
Jan. 8	Iowa City	36	Iowa	22
Jan. 19	Champaign	22	Illinois	21
Jan. 21	Madison	34	Iowa	19
Jan. 26	Madison	21	Purdue	16
Feb. 16	Chicago	21	Chicago	23
Feb. 23	Madison	23	Illinois	15
Mar. 2	Minn'polis	18	Minnesota	17
Mar. 7	Madison	26	Northwestern	18
Mar. 9	Madison	16	Chicago	13
Mar. 13	Lafayette	24	Purdue	18
Mar. 16	Madison	11	Minnesota	19

1918-1919

Coach: Guy Lowman		Capt.: A. Zulfer		
		Opponent		
Date	Played at	Wis.	Opponent	
Dec. 27	C'p Grant	16	Camp Grant (OT)	15
Dec. 28	Gr't Lakes	14	Great Lakes	43
Dec. 30	Milwaukee	39	Milwaukee Normal	18
Jan. 4	Madison	12	Great Lakes	14
Jan. 11	Madison	15	Northwestern	20
Jan. 18	Minn'polis	11	Minnesota	38
Jan. 25	Madison	15	Illinois	25
Feb. 1	Madison	19	Chicago	24
Feb. 10	Madison	29	Iowa	18
Feb. 15	Urbana	14	Illinois	16
Feb. 22	Evanston	23	Northwestern	32
Feb. 24	Bloom'gton	29	Indiana	26
Mar. 1	Madison	12	Minnesota	13
Mar. 8	Chicago	25	Chicago	19
Mar. 10	Iowa City	27	Iowa	25
Mar. 15	Madison	12	Indiana	22

1919-1920

Coach: Guy Lowman		Capt.: Howard Knapp		
		Opponent		
Date	Played at	Wis.	Opponent	
Dec. 5	Madison	36	River Falls Norm.	17
Dec. 13	Madison	19	Ripon (OT)	16
Dec. 16	Madison	33	Beloit	11
Dec. 19	Ripon	20	Ripon	13
Dec. 20	Oshkosh	17	Oshkosh Normal	7
Jan. 1	Milwaukee	36	Milwaukee Normal	10
Jan. 3	Gr't Lakes	27	Great Lakes	19
Jan. 5	Iowa City	35	Iowa	18
Jan. 10	Madison	33	Great Lakes	15

Jan. 17	Chicago	19	Chicago	37
Jan. 19	Madison	20	Iowa	21
Jan. 24	Urbana	20	Illinois	43
Jan. 31	Madison	28	Minnesota	12
Feb. 14	Madison	40	Michigan	13
Feb. 21	Madison	33	Illinois	29
Feb. 24	Madison	31	Ohio State	27
Feb. 28	Minn'polis	26	Minnesota	32
Mar. 6	Ann Arbor	20	Michigan	23
Mar. 8	Columbus	34	Ohio State	22
Mar. 12	Madison	26	Chicago	17

1920-1921

Coach: W. E. Meanwell		Capt.: Warren Taylor		
		Opponent		
Date	Played at	Wis.	Opponent	
Dec. 6	Madison	34	Frosh	12
Dec. 9	Madison	25	Frosh	10
Dec. 10	Madison	29	Knox	16
Dec. 12	Madison	28	River Falls Norm.	8
Dec. 17	LaCrosse	24	LaCrosse Normal	12
Dec. 18	Milwaukee	23	Marquette	18
Dec. 29	Madison	24	So. Dakota Aggies	11
Jan. 3	Evanston	12	Northwestern	13
Jan. 8	Ann Arbor	27	Michigan	24
Jan. 15	Chicago	27	Chicago	39
Jan. 22	Madison	23	Illinois	17
Jan. 24	Madison	25	Michigan	18
Jan. 29	Minn'polis	21	Minnesota	22
Feb. 12	Madison	22	Northwestern	10
Feb. 19	Champaign	9	Illinois	17
Feb. 21	Columbus	40	Ohio State	21
Feb. 26	Madison	25	Chicago	19
Mar. 5	Madison	18	Minnesota	21
Mar. 8	Madison	34	Ohio State	24

1921-1922

Coach: W. E. Meanwell		Capt.: Duke Caesar		
		Opponent		
Date	Played at	Wis.	Opponent	
Dec. 2	Madison	20	Frosh	10
Dec. 8	Madison	26	Frosh	10
Dec. 10	Madison	27	Michigan Aggies	13
Dec. 16	Madison	20	Butler	26
Dec. 17	Madison	27	Ripon	17
Dec. 20	Madison	15	Knox	9
Dec. 22	Milwaukee	23	Milw. Nor. M Club	19
Dec. 23	LaCrosse	24	LaCrosse Normal	21
Jan. 3	Madison	27	Nebraska	14
Jan. 7	Iowa City	18	Iowa	15
Jan. 9	Evanston	21	Northwestern	9
Jan. 14	Madison	18	Michigan (OT)	16
Jan. 21	Madison	15	Minnesota	17
Feb. 10	Madison	25	Illinois	23
Feb. 13	Madison	18	Iowa	24
Feb. 18	Ann Arbor	17	Michigan	18
Feb. 22	Madison	23	Northwestern	11
Feb. 27	Champaign	35	Illinois	37
Mar. 4	Minn'polis	34	Minnesota	20
Mar. 8	Madison	24	Chicago	17
Mar. 11	Chicago	31	Chicago	24

1922-1923

Coach: W. E. Meanwell		Capt.: Gus Tebell		
		Opponent		
Date	Played at	Wis.	Opponent	
Dec. 11	Madison	39	Frosh	14
Dec. 13	Madison	28	Frosh	8
Dec. 15	Madison	13	Butler	20
Dec. 19	Madison	37	Lombard	9
Jan. 3	Madison	8	Marquette	9
Jan. 6	Evanston	21	Northwestern	10
Jan. 8	Bloom'gton	17	Indiana	10
Jan. 13	Madison	24	Chicago	11
Jan. 20	Minn'polis	24	Minnesota	11
Feb. 6	Lafayette	13	Purdue	17
Feb. 14	Ann Arbor	18	Michigan	15
Feb. 19	Madison	16	Michigan	11
Feb. 24	Madison	20	Purdue	19
Mar. 3	Madison	36	Minnesota	10
Mar. 5	Madison	29	Northwestern	17
Mar. 10	Chicago	33	Chicago	11
Mar. 12	Madison	35	Indiana	17

1923-1924

Coach: W. E. Meanwell		Capt.: Douglas Gibson		
		Opponent		
Date	Played at	Wis.	Opponent	
Nov. 30	Madison	49	Frosh	7
Dec. 4	Madison	52	Frosh	6
Dec. 7	Madison	39	Frosh	19
Dec. 8	Madison	53	Milliken	13
Dec. 14	Madison*	25	DePauw	25
Dec. 19	Milwaukee	27	Marquette	7
Jan. 2	Madison	18	Franklin	21
Jan. 5	Bloom'gton	23	Indiana	21
Jan. 12	Evanston	25	Northwestern	10
Jan. 14	Madison	28	Indiana	27
Jan. 26	Chicago	18	Chicago	35
Feb. 12	Madison	25	Butler	23
Feb. 16	Madison	13	Illinois	12
Feb. 23	Columbus	13	Ohio State	27
Feb. 25	Champaign	20	Illinois	31
Mar. 1	Madison	23	Northwestern	14
Mar. 3	Madison	30	Ohio State	20

Mar. 8	Iowa City	19	Iowa	22
Mar. 11	Madison	36	Iowa	26
Mar. 15	Madison	30	Chicago	14

*Three overtimes.

1924-1925

Coach: W. E. Meanwell		Capt.: M. Diebold		
		Opponent		
Date	Played at	Wis.	Opponent	
Dec. 2	Madison	15	Frosh	11
Dec. 4	Madison	39	Frosh	19
Dec. 9	Madison	31	Frosh	18
Dec. 12	Madison	21	Wabash	20
Dec. 19	Madison	16	Butler	22
Dec. 22	Madison	29	Grinnell	15
Jan. 6	Madison	27	DePauw	22
Jan. 10	Minn'polis	14	Minnesota	16
Jan. 13	Madison	20	Ohio State	27
Jan. 19	Ann Arbor	12	Michigan	14
Jan. 24	Madison	14	Minnesota	25
Feb. 11	Madison	11	Franklin	26
Feb. 16	Madison	16	Iowa	15
Feb. 21	Urbana	25	Illinois	35
Feb. 23	Madison	22	Purdue	30
Feb. 28	Madison	16	Michigan	27
Mar. 3	Iowa City	25	Iowa	23
Mar. 9	Madison	24	Illinois	9
Mar. 12	Lafayette	26	Purdue	32
Mar. 14	Columbus	23	Ohio State	37

1925-1926

Coach: W. E. Meanwell		Capt.: Henry Brooks		
		Opponent		
Date	Played at	Wis.	Opponent	
Nov. 28	Madison	46	Freshmen	28
Dec. 4	Madison	20	Freshmen	23
Dec. 7	Madison	11	No. Dak. Aggies	16
Dec. 12	Madison	42	So. Dak. Aggies	9
Dec. 18	Milwaukee	48	Marquette	26
Jan. 2	Madison	32	DePauw	31
Jan. 5	Madison	36	Minnesota	24
Jan. 11	Madison	33	Indiana	31
Jan. 16	Madison	15	Chicago	17
Jan. 23	Madison	35	Northwestern	27
Feb. 5	Madison	31	Butler	24
Feb. 13	Chicago	26	Chicago	23
Feb. 16	Evanston	26	Northwestern	36
Feb. 20	Madison	21	Purdue	29
Feb. 22	Ann Arbor	13	Michigan	22
Feb. 26	Lafayette	31	Purdue	32
Mar. 1	Madison	23	Michigan (OT)	24
Mar. 5	Minn'polis	19	Minnesota	31
Mar. 9	Bloom'gton	20	Indiana	35

1926-1927

Coach: W. E. Meanwell		Co-Capt.: Ralph Merkle,		
		Rollie Baraum		
Date	Played at	Wis.	Opponent	
Dec. 1	Madison	45	Freshmen	17
Dec. 17	Madison	24	Franklin	27
Dec. 22	Milwaukee	29	Marquette	26
Dec. 30	Madison	24	DePauw	20
Jan. 3	Cleveland	31	Syracuse	24
Jan. 8	Madison	23	Indiana	28
Jan. 10	Madison	25	Ohio State	16
Jan. 15	Evanston	28	Northwestern	18
Jan. 17	Chicago	33	Chicago (OT)	30
Jan. 22	Madison	25	Northwestern	24
Feb. 8	Madison	14	Notre Dame	19
Feb. 12	Madison	31	Chicago	20
Feb. 19	Columbus	16	Ohio State	20
Feb. 22	Madison	24	Iowa	21
Feb. 26	Bloom'gton	23	Indiana	31
Feb. 28	Champaign	28	Illinois	32
Mar. 5	Madison	39	Illinois	13
Mar. 11	Iowa City	17	Iowa	26

1927-1928

Coach: W. E. Meanwell		Capt.: Louis Behr		
		Opponent		
Date	Played at	Wis.	Opponent	
Dec. 7	Madison		Frosh	Cancelled
Dec. 10	Madison	48	Coe College	6
Dec. 16	Madison	25	Butler	18
Dec. 19	Madison	32	DePauw	17
Jan. 2	Madison	36	Oregon State	21
Jan. 7	Columbus	30	Ohio State	13
Jan. 9	Madison	26	Michigan	22
Jan. 14	Minn'polis	35	Minnesota	26
Jan. 16	Madison	33	Illinois	34
Feb. 7	Madison	14	Notre Dame	21
Feb. 11	Madison	38	Minnesota	18
Feb. 18				

Dec. 15	Milwaukee	34	Pittsburgh	24
Dec. 29	Madison	29	Lombard	12
Jan. 1	Madison	32	Carleton	24
Jan. 5	Minn'polis	29	Minnesota	21
Jan. 7	Madison	33	Michigan	31
Jan. 12	Chicago	23	Chicago	21
Jan. 14	Madison	24	Indiana	20
Jan. 19	Madison	39	Minnesota	17
Jan. 21	Lafayette	31	Purdue	26
Feb. 12	Madison	48	Bradley Tech.	22
Feb. 16	Bloom'gton	27	Indiana	25
Feb. 18	Madison	37	Northwestern	23
Feb. 23	Evanston	31	Northwestern	25
Feb. 25	Madison	27	Purdue	24
Mar. 4	Ann Arbor	22	Michigan	37
Mar. 9	Madison	19	Chicago	15

1929-1930

Coach: W. E. Meanwell				Capt.: Harold Foster	
Date	Played at	Wis.	Opponent		
Nov. 30	Madison	21	Frosh	2	
Dec. 6	Madison	41	Frosh	23	
Dec. 14	Madison	28	Monmouth	10	
Dec. 19	Madison	27	Carleton	18	
Dec. 28	Madison	22	Lombard	11	
Dec. 31	Madison	34	Iowa State	17	
Jan. 4	Evanston	14	Northwestern	23	
Jan. 11	Columbus	32	Ohio State	25	
Jan. 18	Madison	14	Illinois	9	
Jan. 20	Madison	33	Chicago	23	
Jan. 23	Bloom'gton	23	Indiana (OT)	21	
Feb. 8	Madison	22	Carroll	13	
Feb. 11	Madison	29	Marquette	15	
Feb. 13	Milwaukee	29	Marquette	22	
Feb. 15	Madison	29	Northwestern	22	
Feb. 22	Chicago	21	Chicago	23	
Feb. 24	Madison	23	Illinois	17	
Mar. 3	Madison	32	Ohio State	23	
Mar. 8	Madison	34	Indiana	23	

1930-1931

Coach: W. E. Meanwell				Co-Capt.: John Paul, Ed Chimelewski	
Date	Played at	Wis.	Opponent		
Dec. 9	Madison	32	Freshmen	17	
Dec. 13	Madison	17	Carroll College	14	
Dec. 18	Madison	25	Pennsylvania	12	
Dec. 22	Madison	37	Missouri	9	
Dec. 30	Milwaukee	14	Marquette	16	
Jan. 5	Champaign	12	Illinois	9	
Jan. 10	Columbus	19	Ohio State	29	
Jan. 12	Ann Arbor	17	Michigan	23	
Jan. 17	Madison	24	Iowa	13	
Jan. 19	Minn'polis	26	Minnesota	28	
Jan. 24	Madison	30	Illinois	20	
Feb. 9	Madison	39	Washington (St.L.)	9	
Feb. 14	Madison	15	Minnesota	42	
Feb. 16	Iowa City	17	Iowa	19	
Feb. 21	Lafayette	27	Purdue	46	
Feb. 23	Madison	28	Ohio State	24	
Feb. 28	Madison	15	Michigan	26	
Mar. 2	Madison	17	Purdue	24	

1931-1932

Coach: W. E. Meanwell				Capt.: Marv Steen	
Date	Played at	Wis.	Opponent		
Dec. 5	Madison	21	Freshmen	10	
Dec. 11	Madison	30	Brigham Young	16	
Dec. 15	Madison	30	Pittsburgh	29	
Dec. 21	Milwaukee	23	Marquette	26	
Dec. 30	Madison	32	Maryland (OT)	30	
Jan. 4	Evanston	30	Northwestern (OT)	31	
Jan. 9	Madison	18	Michigan	24	
Jan. 11	Lafayette	22	Purdue	38	
Jan. 16	Chicago	24	Chicago	18	
Jan. 18	Madison	24	Northwestern	18	
Feb. 8	Madison	18	Marquette	26	
Feb. 10	Madison	28	Butler	17	
Feb. 15	Bloom'gton	21	Indiana	33	
Feb. 20	Minn'polis	17	Minnesota	43	
Feb. 22	Madison	34	Chicago	23	
Feb. 27	Madison	21	Purdue	38	
Feb. 29	Ann Arbor	13	Michigan	33	
Mar. 5	Madison	35	Indiana	26	
Mar. 7	Madison	21	Minnesota	23	

1932-1933

Coach: W. E. Meanwell				Capt.: Ray Wickman	
Date	Played at	Wis.	Opponent		
Nov. 28	Madison	34	Freshmen	27	
Dec. 3	Madison	18	Frosh	8	
Dec. 5	Madison	36	Alumni-Frosh	21	
Dec. 10	Madison	29	Carleton	34	
Dec. 17	Madison	16	Marquette	18	
Dec. 22	Coll. Sta.	22	Maryland	13	
Dec. 30	Madison	26	Michigan State	16	
Jan. 3	Milwaukee	16	Marquette	22	
Jan. 7	Madison	26	Chicago	17	
Jan. 9	Madison	21	Iowa	19	
Jan. 14	Bloom'gton	38	Indiana (OT)	37	
Jan. 16	Evanston	22	Northwestern	40	

Feb. 3	Madison	28	Loyola (Chicago)	26
Feb. 6	Madison	30	Ohio State	31
Feb. 11	Champaign	25	Illinois	38
Feb. 13	Iowa City	25	Iowa	31
Feb. 18	Madison	28	Indiana (OT)	29
Feb. 20	Madison	15	Illinois	29
Feb. 25	Madison	28	Northwestern	30
Feb. 27	Wis. Rapids	24	Stevens Point	28
Mar. 4	Columbus	20	Ohio State	37
Mar. 6	Chicago	28	Chicago	16
Mar. 7	Chicago	24	Loyola (Chicago)	39

1933-1934

Coach: W. E. Meanwell				Capt.: Chub Poser	
Date	Played at	Wis.	Opponent		
Dec. 2	Madison	33	Frosh	22	
Dec. 4	Madison	47	Ripon	18	
Dec. 8	Madison	38	Carleton	18	
Dec. 11	Madison	44	Carroll	17	
Dec. 16	Madison	32	Marquette	30	
Dec. 20	Wis. Rapids	35	Stevens Point	10	
Dec. 30	Madison	37	Butler	27	
Jan. 2	Milwaukee	26	Marquette	28	
Jan. 6	Champaign	17	Illinois	20	
Jan. 8	Iowa City	26	Iowa	32	
Jan. 13	Madison	34	Michigan	23	
Jan. 15	Madison	26	Purdue	27	
Feb. 5	Madison	22	Michigan State	23	
Feb. 10	Minn'polis	31	Minnesota	30	
Feb. 12	Madison	42	Ohio State	23	
Feb. 17	Madison	28	Illinois	22	
Feb. 19	Ann Arbor	32	Michigan	26	
Feb. 24	Columbus	44	Ohio State	38	
Feb. 26	Lafayette	25	Purdue	37	
Mar. 3	Madison	35	Iowa	32	
Mar. 5	Madison	34	Minnesota	23	

1934-1935

Coach: Harold Foster				Capt.: Chub Poser	
Date	Played at	Wis.	Opponent		
Nov. 28	Madison	30	Freshmen	43	
Nov. 30	Madison	34	Franklin College	11	
Dec. 7	Madison	27	Carleton	26	
Dec. 10	Madison	33	Wabash	20	
Dec. 15	Madison	29	Marquette	20	
Dec. 22	Milwaukee	25	Marquette	33	
Dec. 29	Madison	27	Pittsburgh	31	
Dec. 31	Madison	23	Mich. State (OT)	21	
Jan. 5	Madison	18	Purdue	19	
Jan. 7	Madison	16	Northwestern	9	
Jan. 12	Bloom'gton	30	Indiana	23	
Jan. 14	Madison	34	Michigan	20	
Jan. 19	Evanston	31	Northwestern	36	
Jan. 21	Madison	38	Minnesota	31	
Feb. 9	Madison	28	DePauw	27	
Feb. 11	Madison	26	Chicago	24	
Feb. 16	Madison	37	Indiana (OT)	27	
Feb. 18	Minn'polis	28	Minnesota	27	
Feb. 23	Ann Arbor	33	Michigan	19	
Mar. 2	Chicago	44	Chicago	25	
Mar. 4	Lafayette	28	Purdue	43	

1935-1936

Coach: Harold Foster				Capt.: Ed Stege	
Date	Played at	Wis.	Opponent		
Nov. 28	Madison	34	Freshmen*	41	
Nov. 30	Madison	29	Carroll*	23	
Dec. 2	Madison	18	DePauw	16	
Dec. 6	Madison	26	Michigan State	21	
Dec. 9	Madison	29	Hamline	20	
Dec. 14	Madison	35	Marquette	22	
Dec. 21	Milwaukee	46	Marquette	21	
Dec. 23	Chicago	22	DePaul (S)	27	
Jan. 1	Madison	36	Washburn College	27	
Jan. 4	Columbus	23	Ohio State	44	
Jan. 6	Chicago	38	Chicago (OT)	36	
Jan. 11	Madison	27	Illinois	29	
Jan. 13	Madison	27	Iowa	21	
Jan. 20	Madison	24	Indiana	26	
Feb. 8	Madison	28	Butler	24	
Feb. 10	Madison	34	Ohio State	25	
Feb. 15	Champaign	20	Illinois	36	
Feb. 17	Iowa City	25	Iowa	32	
Feb. 22	Bloom'gton	21	Indiana	54	
Feb. 24	Madison	28	Northwestern	33	
Feb. 29	Madison	40	Chicago	32	
Mar. 2	Evanston	26	Northwestern	49	

*On November 28, 1935 the Wisconsin sophomores played with the freshmen.
*On November 30, 1935 the Wisconsin sophomores played with Carroll.

1936-1937

Coach: Harold Foster				Capt.: Gordy Fuller	
Date	Played at	Wis.	Opponent		
Nov. 27	Madison	49	Freshmen	30	
Dec. 4	Madison	38	Ball State T'ch'rs	33	
Dec. 7	Madison	42	North Dakota	25	
Dec. 12	Madison	29	Marquette	21	

Dec. 19	Milwaukee	35	Marquette	29
Dec. 21	Pittsburgh	30	Pittsburgh	41
Dec. 23	Ind'napolis	23	Butler	43
Dec. 30	Madison	17	DePaul	33
Jan. 4	Lafayette	30	Purdue	43
Jan. 9	Madison	28	Illinois	31
Jan. 11	Columbus	22	Ohio State	28
Jan. 16	Madison	31	Michigan	43
Jan. 18	Madison	29	Iowa	23
Feb. 6	Madison	22	Michigan State	17
Feb. 8	Madison	35	Ohio State (OT)	33
Feb. 13	Madison	32	Minnesota	37
Feb. 20	Iowa City	35	Iowa	43
Feb. 22	Champaign	31	Illinois	48
Feb. 27	Minn'polis	17	Minnesota	30
Mar. 1	Madison	46	Purdue	43
Mar. 6	Ann Arbor	27	Michigan	41

1937-1938

Coach: Harold Foster				Co-Capt.: Hod Powell, George Rooney	
Date	Played at	Wis.	Opponent		
Nov. 26	Madison	34	Frosh	15	
Dec. 4	Madison	21	Marquette	32	
Dec. 6	Madison	41	North Dakota	22	
Dec. 11	Madison	44	Pittsburgh	36	
Dec. 13	So. Bend	31	Notre Dame	33	
Dec. 18	Milwaukee	32	Marquette	38	
Dec. 31	Madison	40	Missouri	29	
Jan. 3	Evanston	38	Northwestern	47	
Jan. 8	Madison	35	Minnesota	28	
Jan. 10	Madison	50	Chicago	27	
Jan. 15	Lafayette	34	Purdue	40	
Jan. 17	Madison	39	Michigan	30	
Feb. 5	Madison	30	Michigan State	27	
Feb. 7	Bloom'gton	44	Indiana	47	
Feb. 12	Madison	23	Northwestern	27	
Feb. 14	Chicago	46	Chicago	32	
Feb. 19	Madison	39	Purdue	46	
Feb. 21	Ann Arbor	29	Michigan	58	
Feb. 23	Phi'delphia	52	Pennsylvania	44	
Feb. 28	Madison	34	Indiana	32	
Mar. 5	Minn'polis	28	Minnesota	35	

1938-1939

Coach: Harold Foster				Co-Capt.: Byron Bell, Dave Dupee, Bob Weigandt	
Date	Played at	Wis.	Opponent		
Nov. 25	Madison	32	Frosh	20	
Nov. 28	Madison	31	Frosh	19	
Dec. 2	Madison	41	Beloit	26	
Dec. 5	Madison	27	Marquette	26	
Dec. 10	Madison	45	Notre Dame	39	
Dec. 17	Milwaukee	27	Marquette	46	
Dec. 19	Ind'napolis	21	Butler	24	
Dec. 20	Cincinnati	27	Xavier	26	
Jan. 2	Madison	34	Detroit	27	
Jan. 7	Madison	28	Iowa	24	
Jan. 9	Madison	18	Chicago	28	
Jan. 14	Bloom'gton	19	Indiana	43	
Jan. 16	Ann Arbor	42	Michigan	39	
Jan. 21	Madison	34	Illinois	37	
Feb. 4	Madison	39	Michigan State	37	
Feb. 6	Lafayette	31	Purdue	39	
Feb. 13	Evanston	27	Northwestern	37	
Feb. 18	Madison	32	Purdue (OT)	30	
Feb. 20	Minn'polis	32	Minnesota	34	
Feb. 25	Madison	38	Ohio State	46	
Feb. 27	Madison	35	Minnesota	25	
Mar. 4	Chicago	33	Chicago	39	

1939-1940

Coach: Harold Foster				Co-Capt.: J. Rundell, Walt Anderson	
Date	Played at	Wis.	Opponent		
Nov. 29	Madison	30	Frosh	24	
Dec. 1	Madison	53	Frosh	41	
Dec. 4	Madison	37	Carleton	19	
Dec. 9	Madison	46	Marquette	39	
Dec. 12					

1940-1941		
Date	Played at	Wis. Opponent
Nov. 24	Madison	41 Frosh
Dec. 2	Wis. Rapids	39 Ripon
Dec. 7	Madison	38 Marquette
Dec. 14	Madison	44 Notre Dame
Dec. 18	Madison	34 Pittsburgh
Dec. 21	Milwaukee	30 Marquette
Dec. 31	Milw'kee*	52 Princeton
Jan. 4	Linc., Neb.	46 Nebraska
Jan. 6	Minn'polis	27 Minnesota
Jan. 11	Madison	49 Iowa
Jan. 13	Madison	48 Purdue (OT)
Jan. 18	Ann Arbor	40 Michigan
Jan. 20	Chicago	44 Chicago
Jan. 25	Madison	46 Ohio State
Feb. 8	Madison	59 Butler
Feb. 10	Evanston	48 Northwest'n (OT)
Feb. 15	Madison	46 Illinois
Feb. 17	Lafayette	43 Purdue
Feb. 22	Madison	65 Chicago
Feb. 24	Bloom'gton	38 Indiana
Mar. 1	Madison	42 Minnesota

NCAA Tournament Games		
Mar. 21	Madison	51 Dartmouth
Mar. 22	Madison	36 Pittsburgh
Mar. 29	Kan. City	39 Washington State

1941-1942		
Date	Played at	Wis. Opponent
Nov. 28	Madison	30 Freshmen
Dec. 1	Madison	56 Carroll College
Dec. 6	Madison	35 Marquette
Dec. 13	Madison	43 Notre Dame
Dec. 20	Milwaukee	36 Marquette
Dec. 31	Milw'kee*	49 Dartmouth
Jan. 3	Madison	40 Illinois
Jan. 5	Bloom'gton	34 Indiana
Jan. 10	Iowa City	45 Iowa
Jan. 12	Madison	56 Chicago
Jan. 17	Chicago	49 Northwestern (S)
Jan. 19	Madison	58 Michigan
Jan. 24	Madison	42 Indiana
Feb. 7	Madison	42 Great Lakes
Feb. 9	Chicago	54 Chicago
Feb. 14	Madison	49 Ohio State
Feb. 16	Lafayette	34 Purdue
Feb. 21	Madison	59 Northwestern
Feb. 23	Champaign	43 Illinois
Feb. 28	Columbus	44 Ohio State
Mar. 2	Minn'polis	49 Minnesota
Mar. 7	Madison	62 Iowa

1942-1943		
Date	Played at	Wis. Opponent
Nov. 27	Madison	44 Frosh
Nov. 30	Madison	43 Reserves
Dec. 5	Madison	45 Marquette
Dec. 12	Madison	38 Camp Grant
Dec. 14	So. Bend	59 Notre Dame (OT)
Dec. 19	Milwaukee	50 Marquette
Dec. 21	Madison	48 Oklahoma
Dec. 31	Milw'kee*	58 Harvard
Jan. 4	Madison	41 Hamline
Jan. 9	Chicago	67 Northwestern (S)
Jan. 11	Madison	40 Illinois
Jan. 15	Ann Arbor	34 Michigan
Jan. 16	Ann Arbor	55 Michigan
Jan. 26	Grt. Lakes	43 Great Lakes
Jan. 30	Madison	54 Minnesota
Feb. 6	Madison	48 Great Lakes
Feb. 8	Madison	74 Chicago
Feb. 13	Madison	44 Indiana
Feb. 15	Madison	57 Indiana
Feb. 20	Champaign	26 Illinois
Feb. 22	Madison	54 Northwest'n (OT)
Feb. 27	Lafayette	53 Purdue
Mar. 1	Minn'polis	34 Minnesota

1943-1944		
Date	Played at	Wis. Opponent
Nov. 29	Madison	28 DePauw Preflight
Dec. 4	Madison	43 Marquette
Dec. 11	So. Bend	31 Notre Dame
Dec. 13	Madison	40 Camp Grant
Dec. 18	Milwaukee	40 Marquette (Aud.)
Dec. 31	Milw'kee*	47 Notre Dame
Jan. 3	Madison	43 Illinois (OT)
Jan. 7	Champaign	43 Illinois
Jan. 8	Chicago	38 Northwestern
Jan. 14	Madison	50 Michigan
Jan. 15	Madison	42 Michigan

Jan. 29	Minn'polis	49 Minnesota
Feb. 4	Madison	50 Northwest'n (OT)
Feb. 7	Madison	40 Great Lakes
Feb. 11	Bloom'gton	62 Indiana
Feb. 12	Bloom'gton	52 Indiana
Feb. 19	Madison	50 Purdue (DOT)
Feb. 25	Madison	50 Minnesota
Mar. 3	Chicago	35 DePaul (S)
Mar. 4	Chicago	74 Chicago
Mar. 5	Grt. Lakes	47 Great Lakes

1944-1945		
Date	Played at	Wis. Opponent
Nov. 30	Madison	33 Wisconsin A.S.T.P. 23
Nov. 30	Madison	47 Wisconsin Navy
Dec. 2	Madison	48 Lawrence
Dec. 9	Madison	45 Marquette
Dec. 16	Madison	46 Notre Dame
Dec. 20	Madison	51 Iowa Preflight
Dec. 23	Milwaukee	46 Marquette
Dec. 30	Milw'kee*	52 Missouri
Jan. 6	Madison	37 Northwestern
Jan. 8	Truax Fld.	53 Truax Field
Jan. 13	Madison	46 Minnesota
Jan. 22	Madison	51 Great Lakes
Jan. 27	Chicago	44 Northwestern (S)
Jan. 29	Lafayette	34 Purdue
Feb. 2	Ann Arbor	39 Michigan
Feb. 3	Columbus	36 Ohio State
Feb. 4	Grt. Lakes	49 Great Lakes
Feb. 9	Madison	34 Ohio State
Feb. 10	Madison	55 Michigan
Feb. 17	Madison	64 Purdue
Feb. 19	Iowa City	53 Iowa
Feb. 24	Madison	38 Iowa
Mar. 3	Minn'polis	50 Minnesota

1945-1946		
Date	Played at	Wis. Opponent
Dec. 1	Madison	67 Carroll College
Dec. 3	Madison	59 Ripon College
Dec. 8	Madison	42 Marquette
Dec. 15	So. Bend	51 Notre Dame
Dec. 17	Madison	47 Great Lakes
Dec. 22	Milwaukee	41 Marquette
Dec. 23	Grt. Lakes	39 Great Lakes
Jan. 1	Madison	31 Illinois
Jan. 5	Madison	45 Minnesota
Jan. 7	Iowa City	50 Iowa
Jan. 12	Madison	49 Purdue
Jan. 26	Chicago	34 Northwestern (S)
Jan. 28	Lafayette	46 Purdue
Feb. 2	Madison	58 Michigan
Feb. 9	Madison	58 Northwestern
Feb. 11	Ann Arbor	56 Michigan
Feb. 16	Madison	39 Iowa
Feb. 18	Champaign	53 Illinois
Feb. 23	Madison	48 Michigan State
Mar. 1	Lansing	52 Michigan State
Mar. 4	Minn'polis	57 Minnesota

1946-1947		
Date	Played at	Wis. Opponent
Dec. 2	Madison	61 Lawrence
Dec. 7	Madison	65 Marquette
Dec. 9	Ind'napolis	60 Butler
Dec. 14	Madison	53 Notre Dame (OT)
Dec. 18	Madison	40 Oklahoma
Dec. 21	Milwaukee	47 Marquette
Dec. 23	Madison	61 So. California
Jan. 1	Madison	53 Illinois
Jan. 4	Iowa City	63 Iowa
Jan. 11	Madison	70 Indiana
Jan. 20	E. Lansing	58 Michigan State
Jan. 25	Champaign	37 Illinois
Jan. 27	Madison	45 Northwestern
Feb. 3	Madison	60 Iowa
Feb. 8	Madison	60 Minnesota
Feb. 10	Ann Arbor	52 Michigan
Feb. 15	Chicago	54 Northwestern (S)
Feb. 22	Madison	56 Ohio State
Feb. 24	Lafayette	72 Purdue
Mar. 1	Minn'polis	55 Minnesota
Mar. 20	Madison	56 C.C.N.Y.
Mar. 22	Madison	50 Navy

1947-1948		
Date	Played at	Wis. Opponent
Dec. 1	Madison	56 Freshmen
Dec. 6	Madison	57 Marquette
Dec. 8	Madison	61 Butler
Dec. 12	Madison	49 Pittsburgh

Dec. 19	B'keley, C.	61 California
Dec. 20	B'keley, C.	44 California
Dec. 22	N'man, Ok.	49 Oklahoma
Dec. 31	Milwaukee	67 Marquette
Jan. 3	Madison	52 Illinois
Jan. 5	Madison	59 Minnesota
Jan. 10	Bloom'gton	58 Indiana
Jan. 12	Madison	60 Iowa
Jan. 17	Madison	39 Michigan
Jan. 19	Madison	49 Purdue
Jan. 24	Champaign	36 Illinois
Feb. 7	Chicago	68 Northwestern (S)
Feb. 9	Madison	51 Michigan State
Feb. 16	Columbus	47 Ohio State
Feb. 21	Iowa City	40 Iowa
Feb. 23	Madison	59 Northwestern
Mar. 1	Minn'polis	41 Minnesota

1948-1949		
Date	Played at	Wis. Opponent
Nov. 29	Madison	48 Freshmen
Dec. 1	Madison	66 Ripon
Dec. 4	Madison	67 Marquette (OT)
Dec. 9	Madison	58 Missouri
Dec. 11	Madison	37 Loyola (Chicago)
Dec. 13	So. Bend	54 Notre Dame
Dec. 21	L. Angeles	31 So. California*
Dec. 23	L. Angeles	49 U.C.L.A.*
Dec. 31	Milwaukee	60 Marquette
Jan. 3	Champaign	50 Illinois
Jan. 8	Madison	75 Creighton
Jan. 10	Minn'polis	33 Minnesota
Jan. 15	Madison	58 Indiana
Jan. 17	Madison	54 Ohio State
Feb. 5	Madison	54 Illinois
Feb. 7	Ann Arbor	38 Michigan
Feb. 12	Chicago	56 Northwestern (S)
Feb. 14	Lafayette	48 Purdue
Feb. 19	Iowa City	60 Iowa
Feb. 21	Madison	57 Northwestern
Feb. 26	Madison	79 Western Ontario
Feb. 28	Madison	70 Iowa
Mar. 5	Madison	45 Minnesota

1949-1950		
Date	Played at	Wis. Opponent
Dec. 3	Madison	63 Marquette
Dec. 6	Madison	56 Kansas State
Dec. 8	Madison	36 Oregon State
Dec. 10	Chicago	68 Loyola (Chicago)
Dec. 13	Madison	56 Notre Dame
Dec. 17	Milwaukee	62 Marquette
Dec. 20	Col'bia, Mo.	48 Missouri
Dec. 28	Iowa City	68 Rutgers**
Dec. 30	Madison	54 U.C.L.A.***
Jan. 2	Madison	59 Illinois
Jan. 7	Bloom'gton	59 Indiana
Jan. 14	Madison	53 Michigan
Jan. 16	Madison	57 Minnesota
Feb. 4	Columbus	47 Ohio State
Feb. 6	E. Lansing	66 Michigan State
Feb. 11	Chicago	66 Northwestern
Feb. 13	Iowa City	66 Iowa (OT)
Feb. 18	Madison	53 Iowa
Feb. 20	Madison	56 Purdue
Feb. 25	Champaign	58 Illinois
Feb. 27	Madison	67 Northwestern
Mar. 4	Minn'polis	60 Minnesota

1950-1951		
Date	Played at	Wis. Opp.
Dec. 2	Madison	49 Marquette
Dec. 8	Madison	51 Loyola (Chi.)
Dec. 11	So. Bend	61 Notre Dame
Dec. 16	Milw'kee*	58 Marquette
Dec. 13	Manhattan	58 Kansas State
Dec. 19	St. Louis**	48 St. Louis U. (OT)
Dec. 28	Madison	75 San Jose State
Jan. 1	Madison	69 Illinois (OT)
Jan. 6	Ann Arbor	61 Michigan
Jan. 8	E. Lansing	53 Michigan State
Jan. 13	Columbus	74 Ohio State
Jan. 15	Madison	68 Northwestern
Feb. 1	Madison	60 Butler
Feb. 3	Minn'polis	47 Minnesota
Feb. 5	Madison	56 Ohio State
Feb. 10	Champaign	48 Illinois
Feb. 12	Lafayette	46 Purdue
Feb. 17	Madison	60 Iowa
Feb. 24	Madison	35 Michigan State
Feb. 26	Madison	50 Michigan
Mar. 3	Madison	61 Purdue
Mar. 5	Bloom'gton	58 Indiana

36* Arena **Municipal Auditorium

1952-1953

Captains: Charles Siefert and Tom Ward

Date	Played at	Wis.	Opp.
Dec. 1	Madison	48	Marquette
Dec. 8	Madison	53	Notre Dame
Dec. 13	Madison	66	Loyola of South
Dec. 17	Madison	55	St. Louis U.
Dec. 22	Milw'kee*	47	Marquette
Dec. 27	S. Fr'co**	82	Oregon U.
Dec. 28	S. Fr'co**	49	California U.
Jan. 5	Madison	64	Purdue
Jan. 7	Champaign	49	Illinois
Jan. 12	Madison	58	Ohio State
Jan. 19	Evanston	74	Northwestern
Jan. 21	E. Lansing	39	Michigan State
Feb. 6	India'polis	62	Butler
Feb. 9	Madison	47	Minnesota
Feb. 11	Lafayette	67	Purdue
Feb. 16	Madison	55	Michigan State
Feb. 18	Ann Arbor	55	Michigan
Feb. 23	Madison	48	Indiana
Feb. 25	Madison	69	Michigan
Mar. 1	Columbus	56	Ohio State
Mar. 3	Iowa City	78	Iowa
Mar. 8	Madison	58	Illinois

*Arena **Cow Palace
 Wisconsin won 10, lost 12 for all season.
 Wisconsin won 6, lost 5 at home.
 Wisconsin won 4, lost 7 on road.
 Wisconsin won 5, lost 9 in Big Ten.
 Finished 7th.

SUMMARY OF 1952-53 BASKETBALL SEASON

Date	Place	Pts. Wis.	Pts. Opp.	dance Atten.	Pct. FG	Pct. FT
Dec. 5	Madison	76	Marquette	55	12,000	.329 .588
Dec. 8	New Orleans, La.	81	Loyola (South)	60	3,500	.452 .652
Dec. 15	Madison	75	Iowa U.	70	11,500	.375 .703
Dec. 20	Lafayette, Ind.	59	Purdue	65	4,200	.344 .567
Dec. 26	*Madison	64	California	57	10,700	.387 .602
Dec. 27	*Iowa City, Ia.	64	Oregon U.	66	12,317	.270 .686
Dec. 29	Iowa City, Ia.	66	Iowa U.	83	11,163	.324 .593
Jan. 3	Madison	50	Purdue	56	11,500	.208 .606
Jan. 5	Minneapolis	53	Minnesota	64	8,182	.230 .704
Jan. 10	Champaign, Ill.	61	Illinois	71	6,905	.293 .619
Jan. 12	Madison	76	Minnesota	74	11,200	.293 .833
Jan. 17	Evanston, Ill.	78	Northwestern	56	7,500	.400 .489
Jan. 19	Madison	64	Ohio State	51	11,200	.338 .640
Feb. 7	Madison	61	Illinois	65	13,500	.279 .821
Feb. 9	Bloomington, Ind.	48	Indiana	66	9,700	.189 .625
Feb. 14	Madison	75	Michigan	63	12,100	.307 .690
Feb. 16	Madison	70	Indiana	72	12,500	.319 .800
Feb. 21	Ann Arbor, Mich.	74	Michigan	52	1,500	.284 .649
Feb. 23	East Lansing	45	Michigan State	53	5,461	.326 .789
Feb. 28	Columbus, O.	69	Ohio State	63	4,424	.433 .630
Mar. 7	Madison	74	Northwestern	58	12,200	.368 .600
Mar. 9	Madison	58	Michigan State	51	11,326	.359 .625
Totals		1417		1361	204,578	.326 .660

1952-53 CAGE HIGHLIGHTS

Team Marks Single Game

Most field goals scored—33, vs. Loyola of South.

Most free throw attempts—48, vs. Minnesota and Michigan State.

Most free throws scored—40, vs. Minnesota.

Most personal fouls—27, vs. Minnesota.

Least field goals allowed—13, by Purdue.

Least free throw attempts allowed—16, by Ohio State.

Least free throws scored by opponents—7, by California and Ohio State.

Least personal fouls for opponents—14, by Loyola of South.

Individual Marks Single Game

Most points scored—30, by Morrow (10 fg, 10 ft) vs. Indiana.

Most field goals scored—11, by Cable (in 21 atts.), vs. Iowa (1st game). By Morrow (in 25 atts.), vs. Iowa (2nd game).

Most free throws scored—15, by Morrow (in 24 atts.), vs. Michigan.

Most free throw attempts—24, by Morrow vs. Michigan.

Most rebounds—30, by Morrow vs. Purdue (team made 66).

Breakdown in Attendance

11 home games (1952-53)	129,726
11 road games (1952-53)	74,852
Total	204,578
Home game average crowd	11,793
Road game average crowd	6,805
All game average crowd	9,299

FINAL WISCONSIN BASKETBALL SHOOTING PERCENTAGES

Player	G	FGA	FG	Pct.	FTA	FT	Pct.	PF	Pts.	Ave.
Paul Morrow, c	22	348	119	.342	168	114	.678	94	352	16.0
Dick Cable, f	22	299	110	.368	110	81	.736	57	301	13.7
Charles Siefert, g	22	264	99	.374	99	67	.677	61	265	12.1
Tony Stracka, f	22	237	68	.287	134	91	.679	87	227	10.3
Ron Weisner, f-g	22	107	37	.346	64	34	.531	34	108	4.9
Tom Ward, g	22	136	29	.213	63	41	.651	57	99	4.5
Bob Weber, f c g	20	48	13	.271	38	18	.459	14	44	2.2
Dan Folz, c	16	36	10	.261	27	17	.629	24	37	2.3
Mike Daly, f	15	13	0	.000	11	11	1.000	10	11	0.7
Jack Manning, f	1	1	1	1.000	0	0	.000	0	2	2.0
Roger Godfrey, g	10	1	0	.000	1	1	1.000	2	1	0.1
Dan Spika, g	2	1	0	.000	0	0	.000	3	0	0.0
Owen Roberts, f	4	1	0	.000	0	0	.000	0	0	0.0
Bob Turner, g	2	1	0	.000	2	0	.000	0	0	0.0
Dave Massey, c	1	1	0	.000	2	0	.000	0	0	0.0
Own Team Total	22	1497	486	.326	717	473	.660	443	1447	65.8
Opponents' Total	22	1562	469	.300	659	413	.627	483	1361	61.9

INDIVIDUAL CONFERENCE SCORING FOR BADGERS

Place	G	FG	FGA	Pct.	FT	FTM	Pct.	PF	Pts.	Ave.
8 Morrow, c	18	92	278	.331	91	45	.669	79	275	15.3
16 Cable, f	18	86	246	.350	65	23	.739	47	237	13.2
20 Siefert, g	18	81	229	.354	57	27	.679	55	219	12.2
29 Stracka, f	18	56	202	.277	73	35	.676	75	185	10.3
55 Weisner, f g	18	29	92	.315	23	18	.561	31	81	4.5
57 Tom Ward, g	18	23	106	.217	30	14	.682	46	76	4.2
Less Than 75 Points										
77 Weber, f-c-g	16	11	42	.262	15	17	.469	11	37	2.3
82 Folz, c	14	9	34	.265	17	10	.630	20	35	2.5
104 Daly, f	12	0	9	.000	9	0	1.000	7	9	0.8
128 Manning, f	1	1	1	1.000	0	0	.000	0	2	2.0

FINAL 1953 BIG TEN BASKETBALL STANDINGS

Team	G	W	L	Pct.	FG	FGA	Pct.	FT	FTM	Pct.	PF	Pts.	Pts.
Indiana	18	17	1	.944	505	1410	.358	442	190	.699	424	1452	1248
Illinois	18	14	4	.778	531	1496	.355	380	184	.674	391	1442	1223
Michigan State	18	11	7	.611	384	1192	.322	328	208	.612	373	1096	1097
Minnesota	18	11	7	.611	461	1282	.360	385	173	.690	371	1307	1223
Wisconsin	18	10	8	.556	391	1244	.318	378	193	.663	374	1162	1123
Iowa	18	9	9	.500	423	1349	.314	410	238	.633	359	1256	1271
Ohio State	18	7	11	.389	457	1357	.337	364	228	.615	309	1278	1337
Northwestern	18	5	13	.278	440	1361	.323	408	230	.639	430	1288	1368
Michigan	18	3	15	.167	452	1470	.307	343	228	.601	456	1247	1453
Purdue	18	3	15	.167	408	1370	.298	402	286	.584	442	1220	1399

1953-54 Composite Western Conference Basketball Schedule

TUESDAY, DEC. 1
BUTLER AT WISCONSIN
 Ohio U. at Illinois

WEDNESDAY, DEC. 2
 Valparaiso at Purdue

FRIDAY, DEC. 4
WISCONSIN AT MARQUETTE

SATURDAY, DEC. 5
 Illinois at Oklahoma
 Cincinnati at Indiana
 Washington (St. Louis) at Iowa
 Michigan at Pittsburgh
 Creighton at Michigan State
 Minnesota at Nebraska
 Western Michigan at Northwestern
 Ohio State at Butler
 Wabash at Purdue

MONDAY, DEC. 7
WISCONSIN AT LOYOLA (Chi'go)
 Kansas State at Indiana
 Tulsa at Minnesota
 Northwestern at Notre Dame

TUESDAY, DEC. 8
 Valparaiso at Michigan
 Ohio State at St. Louis U.
 Purdue at Bradley

WEDNESDAY, DEC. 9
 Butler at Illinois

THURSDAY, DEC. 10
 Oklahoma A.&M. at Minnesota

SATURDAY, DEC. 12
MISSOURI AT WISCONSIN
 Alabama at Illinois
 Indiana at Butler
 Iowa at Nebraska
 Marquette at Michigan
 Oklahoma at Ohio State
 Loyola (Chicago) at Purdue

MONDAY, DEC. 14
 Notre Dame at Indiana
OKLAHOMA AT WISCONSIN

TUESDAY, DEC. 15
 Colorado A.&M. at Iowa
 Butler at Purdue

THURSDAY, DEC. 17
 Michigan State at Marquette

FRIDAY, DEC. 18
 Indiana at Montana State
 Southern California at Iowa

SATURDAY, DEC. 19
WISCONSIN AT LOUISIANA ST.
 DePaul at Illinois
 Michigan at Butler
 Southern California at Michigan St.
 Colorado U. at Minnesota
 Northwestern at Tulane
 Ohio State at Louisville
 Purdue at Washington (St. Louis)

MONDAY, DEC. 21
WISCONSIN AT TULANE
 Oklahoma A.&M. at Illinois
 Indiana at Oregon State
 Colorado at Iowa

Michigan at Cincinnati
 Minnesota at Tulsa
 Northwestern at Louisiana State
 Ohio State at Miami (Florida)

TUESDAY, DEC. 22
 Indiana at Oregon State
 Pittsburgh at Michigan State

WEDNESDAY, DEC. 23
 Marquette at Minnesota

SATURDAY, DEC. 26
 Oregon State at Ohio State

MONDAY, DEC. 28
DENVER U. AT WISCONSIN
 Loyola (Chicago) at Michigan
 Minnesota at Kentucky
 Butler at Northwestern
 Rutgers at Purdue

TUESDAY, DEC. 29
 Utah State at Illinois

WEDNESDAY, DEC. 30
 Iowa at U.C.L.A.
 Michigan State at S. California

THURSDAY, DEC. 31
 Iowa at Southern California
 Michigan State at U.C.L.A.
 Michigan at Marquette
 Notre Dame at Northwestern
 Denver U. at Ohio State

SATURDAY, JAN. 2
PURDUE AT WISCONSIN
 Minnesota at Illinois
 Indiana at Michigan

MONDAY, JAN. 4
WISCONSIN AT INDIANA
 Illinois at Northwestern
 Michigan State at Iowa
 Ohio State at Michigan

WEDNESDAY, JAN. 6
 Pittsburgh at Ohio State

SATURDAY, JAN. 9
WISCONSIN AT IOWA
 Illinois at Michigan State
 Indiana at Minnesota
 Michigan at Northwestern
 Purdue at Ohio State

MONDAY, JAN. 11
NORTHWESTERN AT WISCONSIN
 Ohio State at Illinois
 Purdue at Indiana
 Michigan at Iowa

SATURDAY, JAN. 16
INDIANA AT WISCONSIN
 Illinois at Ohio State
 Minnesota at Iowa
 Michigan State at Michigan
 Northwestern at Purdue

MONDAY, JAN. 18
WISCONSIN AT MICHIGAN ST.
 Iowa at Illinois
 Ohio State at Purdue
 Pittsburgh at Northwestern

TUESDAY, JAN. 19
 Purdue at Notre Dame

SATURDAY, JAN. 23
 Iowa at Purdue
 Ohio State at Michigan State
 Minnesota at Northwestern

MONDAY, JAN. 25
 Northwestern at Iowa
 Purdue at Minnesota

SATURDAY, JAN. 30
 Washington U. at Michigan
 Michigan State at Minnesota
 Ohio State at Purdue

FRIDAY, JAN. 29
 Northwestern at Butler

MONDAY, FEB. 1
 Illinois at DePaul (Stadium)
 Louisville at Indiana
 Northwestern at Michigan State

SATURDAY, FEB. 6
WISCONSIN AT OHIO STATE
 Michigan at Illinois
 Michigan State at Indiana
 Missouri at Iowa
 Minnesota at Purdue

MONDAY, FEB. 8
 Purdue at Illinois
 Minnesota at Indiana
 Iowa at Michigan
 Ohio State at Northwestern

TUESDAY, FEB. 9
 Notre Dame at Michigan State

SATURDAY, FEB. 13
ILLINOIS AT WISCONSIN
 Indiana at Northwestern
 Iowa at Minnesota
 Michigan at Ohio State
 Michigan State at Purdue

MONDAY, FEB. 15
MINNESOTA AT WISCONSIN
 Indiana at Purdue
 Iowa at Ohio State
 Northwestern at Michigan

SATURDAY, FEB. 20
MICHIGAN AT WISCONSIN
 Illinois at Iowa
 Indiana at Michigan State
 Minnesota at Ohio State
 Purdue at Northwestern

MONDAY, FEB. 22
WISCONSIN AT ILLINOIS
 Iowa at Indiana
 Michigan at Minnesota
 Michigan State at Northwestern

SATURDAY, FEB. 27
WISCONSIN AT PURDUE
 Illinois at Michigan
 Indiana at Ohio State
 Iowa at Michigan State
 Northwestern at Minnesota

MONDAY, MARCH 1
MICHIGAN ST. AT WISCONSIN
 Northwestern at Illinois
 Ohio State at Iowa
 Purdue at Michigan

SATURDAY, MARCH 6
WISCONSIN AT MINNESOTA
 Illinois at Indiana
 Michigan at Michigan State